

# ANNUAL REPORT 2008-2009

**Rhode Island Interscholastic League**



# Rhode Island Interscholastic League Principals' Committee on Athletics 2008-2009 Annual Report

It is indeed a pleasure for me to submit the Rhode Island Interscholastic League Principals' Committee on Athletics 2008-2009 Annual Report to the Rhode Island Principal's Association.

I am excited and look forward to the challenges of 2009-2010. However, I recognize people can not be successful and attain their goals unless they have the cooperation and assistance from others. With the help of the Rhode Island Interscholastic League staff, the Principals' Committee on Athletics, School Principals, Athletic Directors, Coaches, Officials and Volunteers, we hope to maintain the mission and high standards that the RIIL has embodied for many years. Their hard work and service in advocating and supporting what is best for the student-athletes we serve and their role in the success of the League is acknowledged and appreciated.

The Principals' Committee on Athletics, operating the Rhode Island Interscholastic League, provides its member principals and their schools an opportunity to compete on a statewide basis in a sports program administered by principals. The League sports include Baseball, Basketball, Cross Country, Cheerleading, Field Hockey, Football, Golf, Gymnastics, Ice Hockey, Lacrosse, Indoor and Outdoor Track, Soccer, FastPitch Softball, Swimming, Tennis, Volleyball, and Wrestling. In excess of twenty-eight thousand (28,000) girls and boys on one thousand and eight (1008) individual school teams participated in the aforementioned sports offered by the League representing fifty-six (56) public, private, and parochial member schools.

The 2008-2009 school year has been a very busy one for the League staff and the Principals' Committee on Athletics. In addition to the monthly meeting(s) of the Committee, many standing committees have met throughout the year to deal with issues being addressed by the League. In short, 2008-2009 has been one of the busiest and most productive years in recent history.

The Waiver Request Hearing Committee heard a total of forty-four (44) waiver requests for eligibility on issues such as transfer, eight-semester, age, academic eligibility, and foreign exchange. Our current process has proved to be a very fair and successful one for two reasons. It added another level for hearings, which allowed the unsuccessful applicant(s) to appeal to the Principals' Committee on Athletics. Secondly, it reduced the number of hearings conducted by the Principals' Committee on Athletics. To further streamline the waiver process, the PCOA approved the following change to Article 1, Section 16 *Waiver of Rules*:

*The RIIL Executive Director (or designee) shall upon the basis of the completion of the waiver request and documentation provided determine whether the eligibility waiver and/or violation of the by-laws of the Rhode Island Interscholastic League shall be granted or not granted.*

In September 2008, the Rhode Island Interscholastic League conducted separate Annual Conferences for Principals and Athletic Administrators. The conferences were held at Johnson and Wales University, Harborside Campus in Providence, and The Crowne Plaza in Warwick. The purpose of these program is to help schools prepare for the upcoming school year. Many issues pertinent to supervising and administering high school athletic programs for the League's fifty-six (56) member schools were addressed.

The Rhode Island Interscholastic League inducted twelve (12) outstanding individuals into the Rhode Island Interscholastic League High School Athletic Hall of Fame – Class of 2009. The Hall of Fame is dedicated to preserving the colorful tradition of high school athletics in Rhode Island and seeks to highlight the past in order to insure a promising future for Rhode Island high school athletics. The twelve (12) inductees were chosen after a two-level selection process involving the Hall of Fame Selection Committee and the Principals' Committee on Athletics. The inductees were: Charles J. Ajootian, William F. Almon, Mary L. Burke, Manuel C. Correia, James Dionizio, George M. Egan, John Gray, Richard Hazard, Arthur J. Kershaw, Jerome P. Morgan, Christina Batastini Sheehan, and Michael Stenhouse

The following list represents the many accomplishments of the RI Interscholastic League during the 2008-2009 year:

Implemented the Organizational Goals for 2009

Organized the Annual Principal and AD Conference

Organized the RIIL Student-Athlete Leadership Forum: Captain's Challenge in conjunction with the RI National Guard in the fall

Named six students from Rhode Island who will participate in the NFHS Student Leadership Conference in July, 2009

RIIL Student-Athlete Wellness Program: Organized the Eat to Compete Workshop for coaches and others

Met with the RIIL Sports Medicine Advisory Committee (SMAC)

Convened the RIIL Foundation Committee to review 2008-09 grants and select programs to be funded (13 schools received RIIL Foundations Grants)

Collected approximately \$150,000 in sponsor contributions

Audit 2008-2009

Met with the RIIL Finance Committee (August, November & June)

Distributed the following to schools:

- Monthly bulletins

- 2008-09 Annual Report

- A Revised and Edited Rules & Regulations Manual

Negotiated Official's Agreement:

- Combined our rules in Article 9 (Officials) with present officials agreements

Coaches Education – all coaches have taken the Fundamentals of Coaching course. Presently, we are encouraging coaches to take the sport specific courses in soccer, football, wrestling, etc. We plan to meet with the middle school association regarding this course.

NFHS Baseball Rules:

- Organized clinic for coaches/officials to implement the new rules

Updated the RIIL Rulebook – printed and sent to all schools

Golf Tournament – organized the first RIIL Foundation Golf Tournament to raise awareness and funds

Corporate Sponsors – added the following new sponsors:

- RI National Guard

- Bill Falk Fund

Worked closely with RIIAAA to help organize a separate meeting in September and attend (as requested) monthly meetings

Promoted the mission of the RIIL. Organized the following:

- Challenge Cup

- Spirit of Sport Award

Conducted a competitive bid process for awards and t-shirts.

- The process increased the league's guarantee for t-shirts and reduced our costs for awards.

Signed an agreement with LRG (Licensing Resource Group). This agreement protects school logo's and names and guarantees schools income from stores selling these protected products.

Met with principals, athletic directors and superintendents throughout the state to discuss their issues with the RIIL as well as discuss the direction of the league.

The Rhode Island Interscholastic League would like to recognize and thank the following corporate sponsors for their generous support of the League and the student-athletes it serves: AAA of Southern New England, Amica Insurance, Baden Athletic Balls, Citizens Bank, Cox Sports, The RI National Guard, Blue Cross/Blue Shield of RI, Pepsi, CVS, Dunkin Donuts, Members United Corporate Federal Credit Union, Martin Screen Prints, MetLife Auto & Home, MF Athletics, Nike, Pawtucket Red Sox, Penn Monto, Pepsi, Shamrock Lacrosse, Spalding, U.S. Marines, and Wright's Farm.

The following administrators served on the Principals' Committee on Athletics during the 2008-2009 school year:

John Gray, Chairperson

Donald Kavanagh, Assistant Chairperson

Denise Boule	Robert Littlefield
Patricia DiCenso	Kevin McNamara
Robert Cooney	Scott Barr
John Craig	Dan Kelly
Gerald Foley	Frederick Silva
Colleen Gribbin	Dan Warner
Jeannine Nota- Masse	

I want to express my sincere thanks to the Principals' Committee on Athletics, Mr. John Gray and Mr. Don Kavanagh, Chairperson and Assistant Chairperson respectively for their leadership, expertise, and support. In addition, many thanks to the RIIL Sport Committees, the League staff, the sport directors, and all the people who volunteer their services for their dedication, cooperation, and hard work. The success of the Rhode Island Interscholastic League is due to the efforts of these outstanding people.

In June, the PCOA accepted the resignations from Mr. John Gray (Chairperson), and Mrs. Denise Boule. Both retired from their respective schools as outstanding Principals. The Committee thanked them for their wisdom, and dedication to both their schools and interscholastic sports. Additionally, the Committee selected Mr. Gerald Foley as chairperson.

The RIIL and the Principals Committee on Athletics are deeply grateful to the Rhode Island Association of School Principals and the RI Athletic Administrators Association for their continued support of its membership. Without the strong support of the principals and athletic administrators of our member schools, the Rhode Island Interscholastic League would not enjoy the level of success that presently exists.

As Executive Director, I would like to acknowledge and express my appreciation to Richard Magarian, Assistant Executive Director, for his cooperation, support and efforts on behalf of the League and its student-athletes. I would also like to thank Jane Hale, RIIL Treasurer; Susana Borges, Secretary; Gail Lepore, Secretary and Julie Mancini, Secretary for the important role they play in the success of the League.







*What a Great Year!!*

# *Mission Statement*

The mission of the RI Interscholastic league is to provide its member schools governance, leadership and support for interscholastic athletics which gives student-athletes opportunities to compete in an environment that stresses education, sportsmanship, integrity and safety.

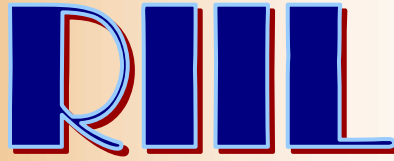
# *Core Values*

## *We believe:*

- Athletics is an integral part of education in our schools.
- Interscholastic athletics is a privilege that enhances the education of students.
- Leadership, responsibility, sportsmanship and scholarship are essential parts of athletics.
- Athletics is an enjoyable experience which fosters valuable life lessons.
- All member schools have the opportunity to be represented and are accountable to the standards of the RIIL.
- Fostering a professional relationship among its colleagues is a responsibility of the RIIL.

# *Vision Statement*

The RIIL is an organization with high standards for its member schools, student athletes, and constituencies. Through professional collegiality the league advocates and promotes the value of interscholastic athletics. The league provides athletic experiences that enable student athletes to reach their highest level of academic and athletic potential and prepares them to become responsible citizens.



## *History*

The Rhode Island Interscholastic League was established in 1932. It is a voluntary, private, incorporated, non-profit organization of principals who pledge their high schools and participants to follow the Rules and Regulations of the league.

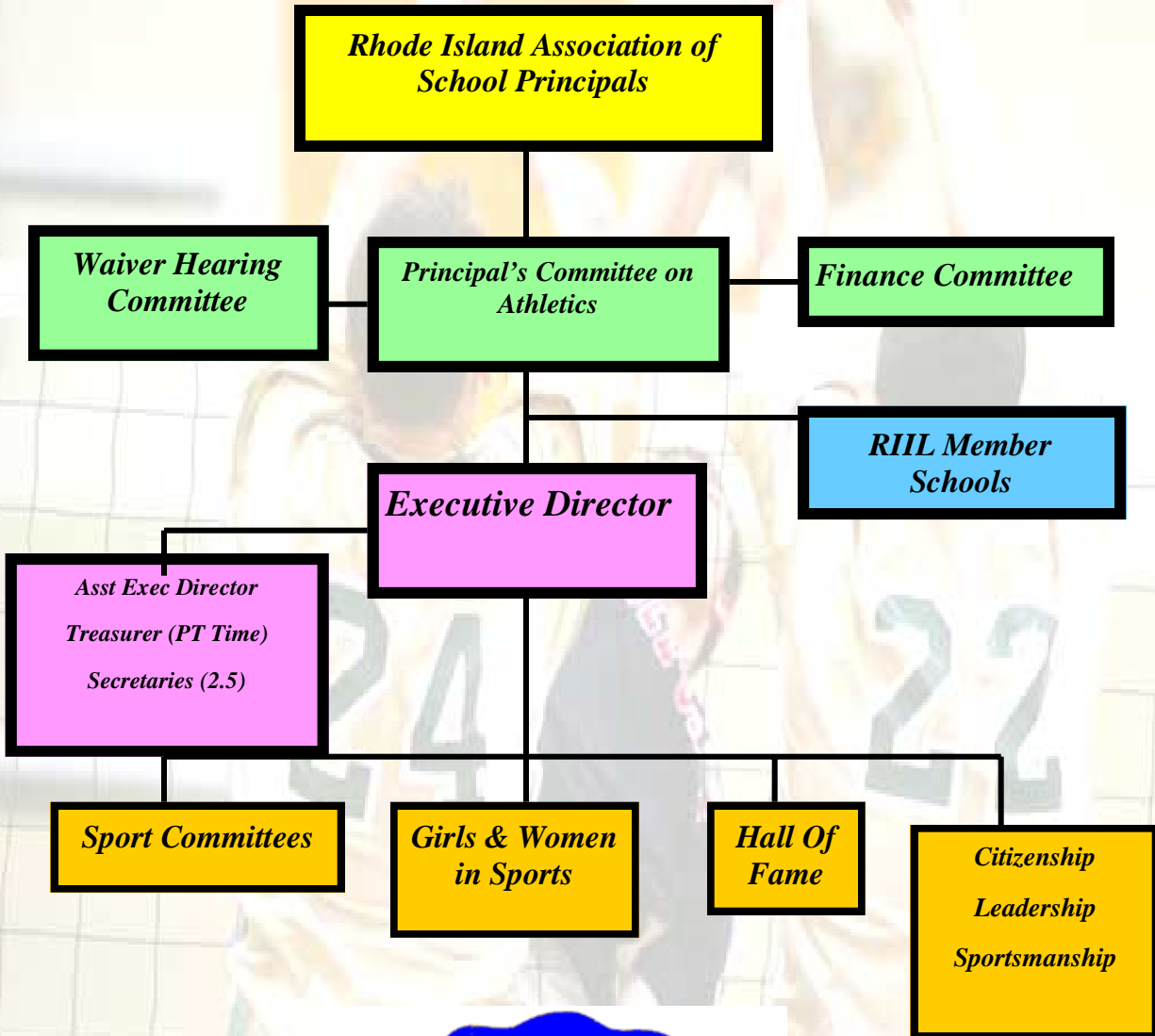
There are fifty-four (54) public, private, and parochial high schools that make up the membership. These schools sponsor athletic activities in twenty-eight (28) sports. Over twenty thousand (20,000) young men and women compete annually in thousands of competitions.

The purpose of the Rhode Island Interscholastic League is to supervise and administer the athletic programs, contests, schedules and matters related to participating schools in the State of Rhode Island.






# *Rhode Island Interscholastic League Organization Chart*





# GOVERNING PROCESS OF THE RIIL



The legislative body of the League is the *Principals' Committee on Athletics*, which consists of principals/assistant principals of the fifty-four (54) member high schools. The Committee meets on a monthly basis. All meetings are open to the public and anyone who wishes may attend.

Standing Committees are appointed by the Chairperson of the Principals' Committee on Athletics with the approval of the Principals' Committee on Athletics. Standing Committees are established for each sport. Others are established to address issues of general concern to the RIIL membership and to plan programs/activities for the members.

Membership on standing committees is open to superintendents, school administrators, athletic directors, coaches, game officials and physicians. Recommendations are made by these committees to help the Principals' Committee on Athletics set rules and regulations and to provide programs for its schools

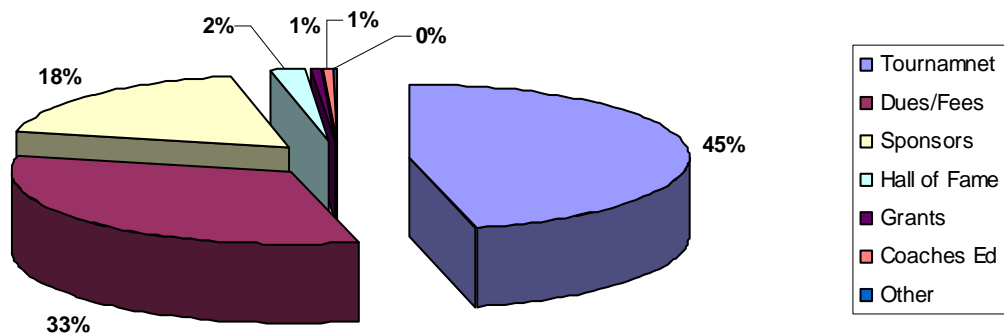
## League Finances

Revenues generated from tournament ticket sales, corporate sponsors, and dues and fees make up the majority of the Leagues operating budget, which is approved annually by the Principal's Committee on Athletics. The League does not receive any state appropriations.

In addition, the League pays for:

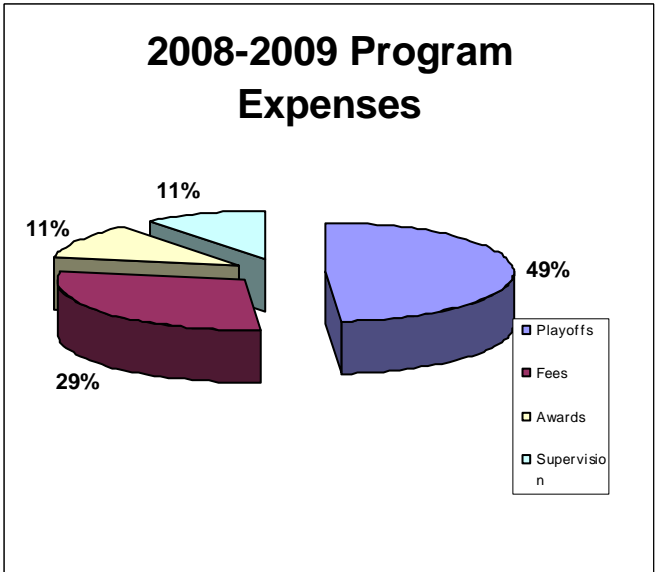
- Liability and accident insurance for League sponsored tournaments
- Medals and Plaques for students participating in League Tournaments

### 2008-2009 Revenue



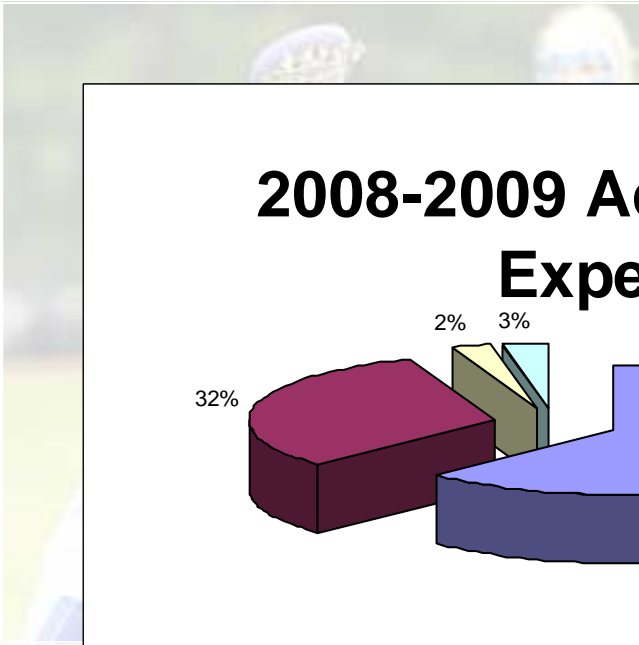
### 2008-2009 Revenue

45%	<b>Tournaments</b>	<b>\$427,378.00</b>
33%	<b>Dues &amp; Fees</b>	<b>\$301,160.00</b>
18%	<b>Sponsors</b>	<b>\$164,750.00</b>
2%	<b>Hall of Fame</b>	<b>\$17,816.00</b>
1%	<b>Grants</b>	<b>\$6,934.00</b>
1%	<b>Coaches Education</b>	<b>\$5,670.00</b>
	<b>Other</b>	<b>\$1,453.00</b>
	<b>Total</b>	<b>\$925,161.00</b>

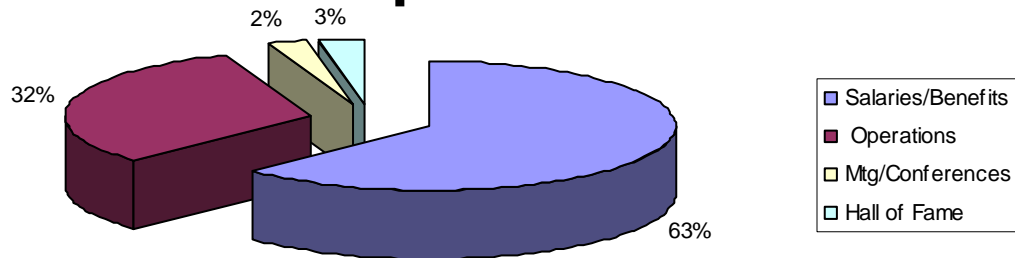


### 2008-2009 Program Expenses

49%	<b>Playoffs</b>	<b>\$174,486.00</b>
29%	<b>Fees</b>	<b>\$105,540.00</b>
11%	<b>Awards</b>	<b>\$40,954.00</b>
10%	<b>Supervision</b>	<b>\$37,817.00</b>
<b>Total</b>		<b>\$358,797.00</b>



### 2008-2009 Administrative Expenses



### 2008-2009 Administrative Expenses

63%	<b>Salaries &amp; Benefits</b>	<b>\$327,770.00</b>
29%	<b>Operations</b>	<b>\$174,116.00</b>
4%	<b>Mtgs &amp; Conferences</b>	<b>\$13,001.00</b>
3%	<b>Hall of Fame</b>	<b>\$15,625.00</b>
<b>Total</b>		<b>\$530,512.00</b>



# RIIL Finances Tournaments

## Revenues /Expenses

### 2008-2009

<b>Tournament</b>	<b>Revenue</b>	<b>Expenses</b>
Football	\$23,386	\$10,307
Boys Soccer	\$21,429	\$8,815
B/G Cross Country	\$8,990	\$8,764
Wrestling	\$23,830	\$25,904
Boys Basketball	\$57,486	\$20,192
B/G Swim	\$9,984	\$19,867
B/G Hockey	\$105,549	\$103,944
B/G Indoor Track	\$18,720	\$38,479
Baseball	\$27,144	\$9,684
B/G Golf	\$None	\$1,385
Boys Tennis	None	\$3,473
B/G Outdoor track	\$10,978	\$22,379
Boys Lacrosse	\$8,934	\$3,785
Boys Volleyball	\$6,137	\$4,838
Girls Soccer	\$19,445	\$8,106
Field Hockey	\$6,886	\$4,679
Girls Volleyball	\$9,707	\$6,353
Gymnastics	\$2,187	\$5,062
Girls Tennis	None	\$2,970
Fast Pitch Softball	\$13,137	\$9,023
Girls Lacrosse	\$4,425	\$4,188
Cheerleading	\$9,677	\$7,973
Girls Basketball	\$32,265	\$13,639
<b>Totals</b>	<b>\$420,296</b>	<b>\$343,800</b>



## League Services to Member Schools

The Rhode Island Interscholastic League is a service organization providing its member schools with publications, training opportunities, recognition programs, tournaments, rules interpretation meetings, and other services that assist in the administration of interscholastic sports.

### Communications

The League publishes or posts on its website and in its monthly bulletin.

Athletic Rules and Regulations, includes the bylaws and regulations for the RIIL.

Tournament Programs provide tournament fans with information about the teams participating in each League-sponsored tournament/meet.

Web Site [www.riil.org](http://www.riil.org) keeps member schools and fans up to date on League activities, rules and events.

### RIIL Foundation

The RIIL Foundation was created to serve the interests of student-athletes by awarding grants in the areas of character education, sportsmanship and leadership.

### Recognition

The League sponsors the **RIIL Hall of Fame** for the most distinguished individuals involved in high school athletics.

### Tournaments

The League supervises and administers state tournaments in 28 athletic events for its member schools.

Assists the media outlets statewide in their coverage of high school sports.

Provides accident insurance for every student, coach, and official that participates in a league-sponsored activity.

### Student Leadership Conferences

The League sponsors numerous opportunities for student-athletes to take part in an assortment of leadership and sportsmanship activities.

### Student Athlete Wellness Program

*The Performance Edge: Wellness for Winners* is a program designed to provide our student-athletes and coaches with a comprehensive wellness program that will support our high schools by embracing the health and wellness of all participants.

# *Rhode Island Interscholastic League*

Online @ [www.riil.org](http://www.riil.org)

# RHODE ISLAND INTERSCHOLASTIC LEAGUE

## GIRLS PARTICIPATION CHART

SPORT	2006/2007		2007/2008		2008/2009	
	TEAMS	PARTICIPANTS	TEAMS	PARTICIPANTS	Teams	Participants
CROSS CTRY	42	693	41	795	44	795
FIELD HOCKEY	22	695	21	617	21	617
GOLF	1	61	1	49	1	65
ICE HOCKEY	16	212	8	167	8	184
SWIM	33	596	32	602	32	602
TENNIS	43	890	44	890	44	890
BASKETBALL	49	1135	49	1082	49	1082
GYMNASTICS	16	186	19	164	19	164
WRESTLING	0	15	0	10	0	10
VOLLEYBALL	41	994	40	969	40	969
OUTDR TRACK	39	1609	40	1586	40	1586
FAST PITCH	47	1174	47	1127	47	1127
SOCCER	46	1413	48	1488	48	1488
INDR TRACK	36	1188	37	1144	37	1144
BASEBALL	none		none		0	0
LACROSSE	20	631	25	967	25	967
CHEER			26	1508	26	1508
Total	451	11492	484	13,205	484	13,205



# RHODE ISLAND INTERSCHOLASTIC LEAGUE

## BOYS PARTICIPATION CHART

SPORT	2006/2007		2007/2008		2008/2009	
	Teams	Participants	TEAMS	PARTICIPANTS	TEAMS	PARTICIPANTS
BASEBALL	48	1601	48	1721	49	1663
BASKETBALL	47	1430	47	1483	47	1439
CROSS CENTRY	42	901	42	855	44	981
FOOTBALL	41	2986	42	3017	43	2957
GOLF	40	475	40	489	41	439
ICE HOCKEY	35	845	36	881	37	868
LACROSSE	14	496	20	724	22	782
SOCCER	44	1493	44	1586	46	4613
SWIM	24	278	27	323	23	402
TENNIS	40	725	40	764	40	833
INDR TRACK	34	1241	39	1358	38	1432
OUTDR TRACK	39	1547	39	1693	39	1684
WRESTLING	34	963	35	955	33	968
VOLLEYBALL	25	537	25	553	25	558
<b>TOTAL BOYS</b>	<b>497</b>	<b>15518</b>	<b>521</b>	<b>16412</b>	<b>531</b>	<b>16,621</b>
<b>TOTAL B &amp; G</b>	<b>941</b>	<b>26355</b>	<b>972</b>	<b>27,904</b>	<b>1015</b>	<b>29,826</b>



# NATIONAL AFFILIATION

The Rhode Island Interscholastic League is a member of the National Federation of State High School Associations, which consists of the state high school associations of all 50 states and the District of Columbia. Guam, the Philippines, Puerto Rico, the Virgin Islands, and all provinces of Canada are affiliate members.

The objectives of the National Federation of State High School Associations are to:

Serve, protect, and enhance the interstate activity interests of the high schools belonging to the state associations;

Assist in those activities of the state associations which can best be operated on a nationwide scale;

Sponsor meetings, publications, and activities which will permit each state association to profit by the experience of all other member associations;

Coordinate the work so duplication will be minimized;

Formulate, copyright, and publish rules of play or event conduct pertaining to interscholastic activities;

Preserve interscholastic athletic records, and the tradition and heritage of interscholastic sports;

Provide programs, services, material and assistance to state associations, high schools and individual professionals involved in the conduct and administration of interscholastic activities;

Study in general all phases of interscholastic activities and serve as a national resource for information pertaining thereto;

Identify needs and problems related to interscholastic activities and, where practice, provide solutions thereto; and,

Promote the educational values of interscholastic activities to the nation's public.



*Rhode Island Interscholastic League*

*Bldg. #6 R. I. College Campus • 600 Mt. Pleasant Avenue • Providence, RI 02908-1991*

*Tel: (401) 272-9844 • Fax: (401) 272-9838*