



ANNUAL REPORT 2007-2008

Rhode Island Interscholastic League



Rhode Island Interscholastic League Principals' Committee on Athletics 2007-2008 Annual Report

It is indeed a pleasure for me to submit the Rhode Island Interscholastic League Principals' Committee on Athletics 2007-2008 Annual Report to the Rhode Island Principal's Association.

I am excited and look forward to the challenges of 2008-2009. However, I recognize people can not be successful and attain their goals unless they have the cooperation and assistance from others. With the help of the Rhode Island Interscholastic League staff, the Principals' Committee on Athletics, School Principals, Athletic Directors, Coaches, Officials and Volunteers, we hope to maintain the mission and high standards that the RIIL has embodied for many years. Their hard work and service in advocating and supporting what is best for the student-athletes we serve and their role in the success of the League is acknowledged and appreciated.

The Principals' Committee on Athletics, operating the Rhode Island Interscholastic League, provides its member principals and their schools an opportunity to compete on a statewide basis in a sports program administered by principals. The League sports include Baseball, Basketball, Cross Country, Cheerleading, Field Hockey, Football, Golf, Gymnastics, Ice Hockey, Lacrosse, Indoor and Outdoor Track, Soccer, FastPitch Softball, Swimming, Tennis, Volleyball, and Wrestling. In excess of twenty-eight thousand (28,000) girls and boys on one thousand and eight (1008) individual school teams participated in the aforementioned sports offered by the League representing fifty-six (56) public, private, and parochial member schools.

The 2007-2008 school year has been a very busy one for the League staff and the Principals' Committee on Athletics. In addition to the monthly meeting(s) of the Committee, many standing committees have met throughout the year to deal with issues being addressed by the League. In short, 2007-2008 has been one of the busiest and most productive years in recent history.

The Waiver Request Hearing Committee heard a total of forty-two (42) waiver requests for eligibility on issues such as transfer, eight-semester, age, academic eligibility, and foreign exchange. Our current process has proved to be a very fair and successful one for two reasons. It added another level for hearings, which allowed the unsuccessful applicant(s) to appeal to the Principals' Committee on Athletics. Secondly, it reduced the number of hearings conducted by the Principals' Committee on Athletics. To further streamline the waiver process, the PCOA approved the following change to Article 1, Section 16 *Waiver of Rules*:

The RIIL Executive Director (or designee) shall upon the basis of the completion of the waiver request and documentation provided determine whether the eligibility waiver and/or violation of the by-laws of the Rhode Island Interscholastic League shall be granted or not granted.

In September 2007, the Rhode Island Interscholastic League conducted its Annual Conference for Principals/Assistant Principals and Athletic Administrators. The workshop was held at Johnson and Wales University, Harborside Campus in Providence. The purpose of the program was to prepare for the upcoming school year. Many issues pertinent to supervising and administering high school athletic programs for the League's fifty-six (56) member schools were addressed. Mr. Norm Bossio, a retired administrator was the principal speaker. The message he delivered, *The Role of a School Leader- Setting Priorities / Time Management*, was critical to the success of our expanding sports programs...

The Rhode Island Interscholastic League inducted eleven (11) outstanding individuals into the Rhode Island Interscholastic League High School Athletic Hall of Fame – Class of 2008. The Hall of Fame is dedicated to preserving the colorful tradition of high school athletics in Rhode Island and seeks to highlight the past in order to insure a promising future for Rhode Island high school athletics. The eleven (11) inductees were chosen after a two-level selection process involving the Hall of Fame Selection Committee and the Principals' Committee on Athletics. The inductees were: Louis Abbruzzi, James Ahern, Leroy Archibald, Joseph Conley, Maureen Sullivan Dyer, Richard Ernst, Joanne Fitts, Henry Kenyon, Brian Lawton, Donald Panciera, and Thomas Spann. They were inducted on Wednesday, May 7, 2008 at the Quiddnessett Country Club.

The following list represents the many accomplishments of the RI Interscholastic League during the 2006-2007 year:

Implemented the Organizational Goals for 2007-2008:

- Continue to implement the RIIL Strategic Plan
- Monitor our member schools progress in the National Federation's Coaches Education Program
- Implement NFHS rules in the sports of baseball and ice hockey.
- Organize and Conduct Student Leadership conferences
- Organize and implement a Competitive Cheer Sport Championship
- Revise and update the RIIL Rulebook
- Organize and Implement the RIIL Foundation
- Create a Manual for Tournament Operations and provide Guidelines for Security, Safety, and Crowd Control.
- Examine the NFHS Officials Education Program

Organized the Annual Principal/AD Conference

Implemented the NFHS Fundamentals of Coaching Course requirement for all coaches

Organized the RIIL Student-Athlete Leadership Forum at the Ryan Center in the fall.

Organized a Coaches Leadership Forum at the Institute of International Sport

Completed the 2008 Hall of Fame selection and induction ceremony

Named six students from Rhode Island who will participate in the NFHS Student Leadership Conference in July, 2008 in Indianapolis, Indiana at no expense to the students.

Established the RIIL Student-Athlete Wellness Committee

Organized and conducted the First Annual Student-Athlete Wellness Conference held at Johnson & Wales University in June, 2008.

Joined the Healthy School Coalition

Met with the RIIL Sports Medicine Advisory Committee (SMAC)

The Baseball Committee, with the assistance from the SMAC, adopted a pitching restriction for the 2008 season.

Adopted NFHS rules in Boys and Girls Hockey, and will adopt NFHS baseball rules in Spring, 2009

Developed a marketing campaign through Checkmate Consulting. Developed a new RIIL logo and tag. Was a sponsor for the Paw Sox, PC (Basketball/Hockey), URI (Basketball) and the P-Bruins Hockey team.

Convened the RIIL Foundation Committee to review 2007-08 grants and select programs to be funded. Nine schools received RIIL Foundations Grants totaling \$15,000.

Established a Golf Tournament Committee to plan 2009 Golf Tournament which will be used to fund the RIIL Foundation.

Adopted a 5 year ball adoption from Nike for the sports of Boys and Girls Basketball, Boys and Girls Soccer, Football and Golf. In addition, selected Spaulding (Dudley) for Softball, Baden for Boys and Girls Volleyball, Rawlings for Baseball, Penn Monto for Field Hockey and Shamrock for Boys and Girls Lacrosse.

Collected approximately \$150,000 in sponsor contributions

Implemented Competition Cheer as a sport and crowned a champion

Implemented a Competition Cheer Individual Championship

Added New Sponsors: Cox Sports – Hockey

Bill Falk Fund – Track/Field
Blue Cross & Blue Shield – Wellness Conference
RI National Guard
Lead the Way – Field Hockey

Printed, distributed and encouraged schools to implement the manual for High School tournament/game operations.
Distributed *Guidelines for Security, Safety and Crowd Control*.

Implemented the recommendation of Sportsmanship Task Force

Distributed and encouraged schools to review all the RIIL Tournament Safety Guidelines and Supervisory responsibilities.

Audit 2006-2007

Met with the RIIL Finance Committee (November, March, June)

Distributed the following to schools:

Monthly bulletins
2007-08 Annual Report
A Revised and Edited Rules & Regulations Manual

Recommended and proposed numerous rule changes to the RIIL Rulebook

Established the RIIL Official's Committee

Developed the new revised officials' registration form
Discussed various other issues and topics

The Rhode Island Interscholastic League would like to recognize and thank the following corporate sponsors for their generous support of the League and the student-athletes it serves: AAA of Southern New England, Amica Insurance, Baden Athletic Balls, Citizens Bank, Cox Sports, The RI National Guard, Blue Cross/Blue Shield of RI, Pepsi, CVS, Dunkin Donuts, Members United Corporate Federal Credit Union, Martin Screen Prints, MetLife Auto & Home, MF Athletics, Nike, Pawtucket Red Sox, Penn Monto, Pepsi, Shamrock Lacrosse, Spalding, U.S. Marines, and Wright's Farm.

The following administrators served on the Principals' Committee on Athletics during the 2007-2008 school year:

John Gray, Chairperson

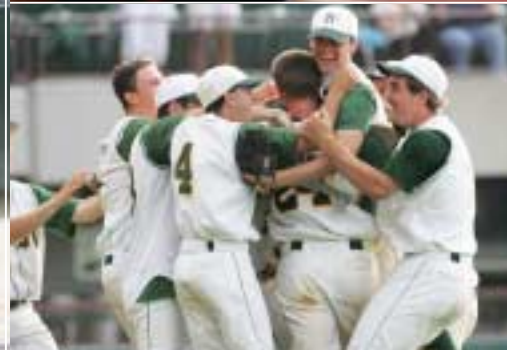
Donald Kavanagh, Assistant Chairperson

Denise Boulé	Robert Littlefield
Dr. Caroline Caswell	Kevin McNamara
Robert Cooney	Dr. Wayne Montague
John Craig	Dan Kelly
Gerald Foley	Frederick Silva
Colleen Gribbin	Dan Warner
Marie Johnson	

I want to express my sincere thanks to the Principals' Committee on Athletics, Mr. John Gray and Mr. Don Kavanagh, Chairperson and Assistant Chairperson respectively for their leadership, expertise, and support. In addition, many thanks to the RIIL Sport Committees, the League staff, the sport directors, and all the people who volunteer their services for their dedication, cooperation, and hard work. The success of the Rhode Island Interscholastic League is due to the efforts of these outstanding people.

The RIIL and the Principals Committee on Athletics are deeply grateful to the Rhode Island Association of School Principals and the RI Athletic Administrators Association for their continued support of its membership. Without the strong support of the principals and athletic administrators of our member schools, the Rhode Island Interscholastic League would not enjoy the level of success that presently exists.

As Executive Director, I would like to acknowledge and express my appreciation to Richard Magarian, Assistant Executive Director, for his cooperation, support and efforts on behalf of the League and its student-athletes. I would also like to thank Jane Hale, RIIL Treasurer; Susana Borges, Secretary; Gail Lepore, Secretary and Julie Mancini, Secretary for the important role they play in the success of the League.



Mission Statement

The mission of the RI Interscholastic league is to provide its member schools governance, leadership and support for interscholastic athletics which gives student-athletes opportunities to compete in an environment that stresses education, sportsmanship, integrity and safety.

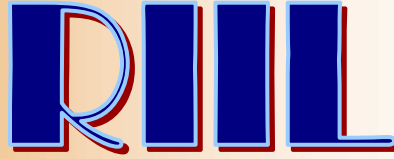
Core Values

We believe:

- Athletics is an integral part of education in our schools.
- Interscholastic athletics is a privilege that enhances the education of students.
- Leadership, responsibility, sportsmanship and scholarship are essential parts of athletics.
- Athletics is an enjoyable experience which fosters valuable life lessons.
- All member schools have the opportunity to be represented and are accountable to the standards of the RIIL.
- Fostering a professional relationship among its colleagues is a responsibility of the RIIL.

Vision Statement

The RIIL is an organization with high standards for its member schools, student athletes, and constituencies. Through professional collegiality the league advocates and promotes the value of interscholastic athletics. The league provides athletic experiences that enable student athletes to reach their highest level of academic and athletic potential and prepares them to become responsible citizens.



History

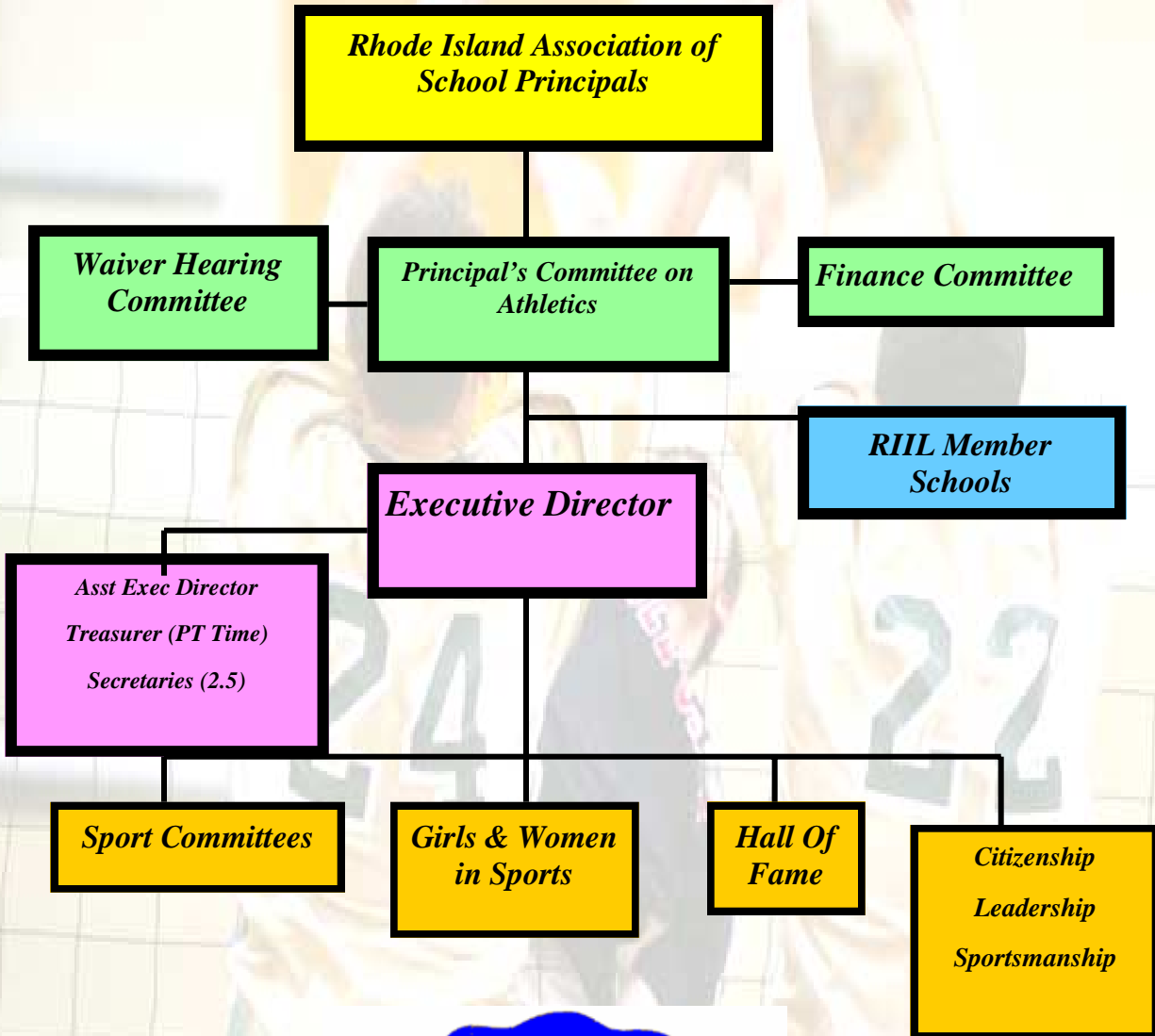
The Rhode Island Interscholastic League was established in 1932. It is a voluntary, private, incorporated, non-profit organization of principals who pledge their high schools and participants to follow the Rules and Regulations of the league.

There are fifty-four (54) public, private, and parochial high schools that make up the membership. These schools sponsor athletic activities in twenty-eight (28) sports. Over twenty thousand (20,000) young men and women compete annually in thousands of competitions.

The purpose of the Rhode Island Interscholastic League is to supervise and administer the athletic programs, contests, schedules and matters related to participating schools in the State of Rhode Island.



Rhode Island Interscholastic League Organization Chart





John Gray
Chairperson



Donald Kavanagh
Assistant Chairperson



GOVERNING PROCESS OF THE RIIL

The legislative body of the League is the *Principals' Committee on Athletics*, which consists of principals/assistant principals of the fifty-four (54) member high schools. The Committee meets on a monthly basis. All meetings are open to the public and anyone who wishes may attend.

Standing Committees are appointed by the Chairperson of the Principals' Committee on Athletics with the approval of the Principals' Committee on Athletics. Standing Committees are established for each sport. Others are established to address issues of general concern to the RIIL membership and to plan programs/activities for the members.

Membership on standing committees is open to superintendents, school administrators, athletic directors, coaches, game officials and physicians. Recommendations are made by these committees to help the Principals' Committee on Athletics set rules and regulations and to provide programs for its schools

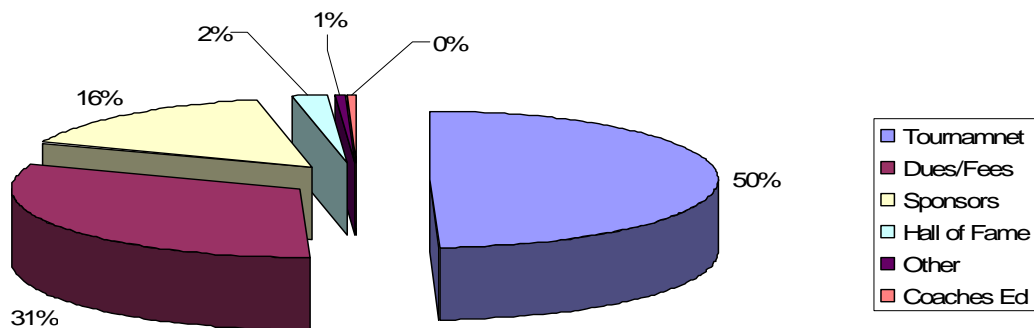
League Finances

Revenues generated from tournament ticket sales, corporate sponsors, and dues and fees make up the majority of the Leagues operating budget, which is approved annually by the Principal's Committee on Athletics. The League does not receive any state appropriations.

In addition, the League pays for:

- Liability and accident insurance for League sponsored tournaments
- Medals and Plaques for students participating in League Tournaments

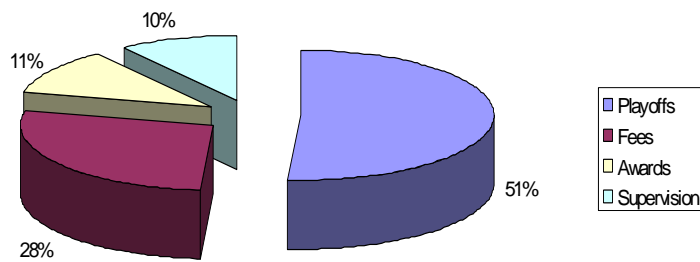
Revenue 2007-2008



2007-2008 Revenue

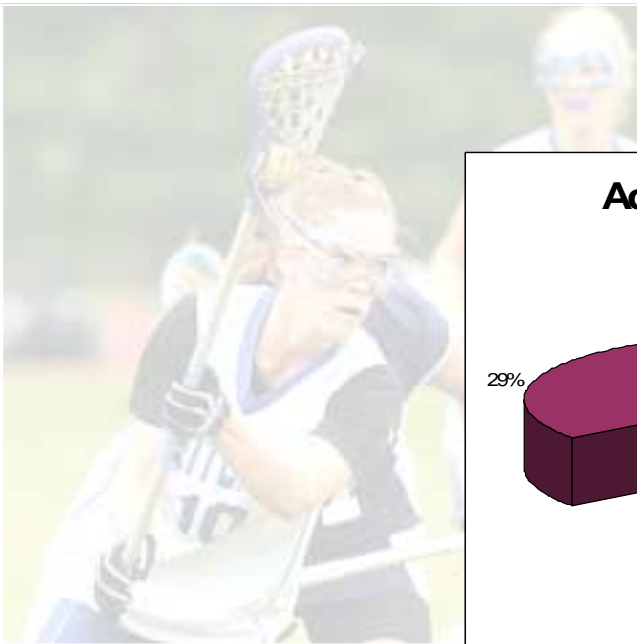
50%	Tournaments	\$465,213.00
31%	Dues & Fees	\$295,915.00
13%	Sponsors	\$153,457.00
1%	Hall of Fame	\$17,055.00
6%	Investments	\$10,000.00
	Other	\$7,150.00
	Coaches Education	\$4,000.00
	Total	\$903,020.00

Program Expenses 2007-2008

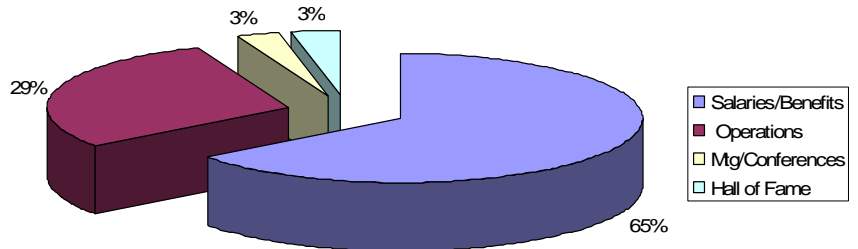


2007-2008 Program Expenses

51%	Playoffs	\$169,989.00
28%	Fees	\$91,710.00
11%	Awards	\$38,000.00
10%	Supervision	\$33,248.00
	Total	\$332,595.00



Administrative Expenses 2007-2008



2007-2008 Administrative Expenses

65%	Salaries & Benefits	\$302,791.00
29%	Operations	\$136,655.00
4%	Mtgs & Conferences	\$12,306.00
3%	Hall of Fame	\$15,715.00
	Total	\$472,757.00

RIIL Finances Tournaments

Revenues /Expenses

2007-2008

Tournament	Revenue	Expenses
Football	\$25,845.00	\$9,769.00
Boys Soccer	\$17,080.00	\$7,538.00
B/G Cross Country	\$6,725.00	\$7,030.00
Wrestling	\$23,602.00	\$23,846.00
Boys Basketball	\$55,894.00	\$18,233.00
B/G Swim	\$8,900.00	\$18,593.00
B/G Hockey	\$216,755.00	\$132,010.00
B/G Indoor Track	\$25,411.00	\$34,278.00
Baseball	\$23,750.00	\$9,493.00
B/G Golf	None	\$1,235.00
Boys Tennis	None	\$3,010.00
B/G Outdoor track	\$10,018.00	\$15,625.00
Boys Lacrosse	\$9,630.00	\$3,889.00
Boys Volleyball	\$6,971.00	\$4,544.00
Girls Soccer	\$19,121.00	\$11,023.00
Field Hockey	\$6,737.00	\$5,699.00
Girls Volleyball	\$11,057.00	\$7,461.00
Gymnastics	\$1,842.00	\$4,795.00
Girls Tennis	None	\$2,791.00
Fast Pitch Softball	\$8,110.00	\$8,039.00
Girls Lacrosse	\$4,473.00	\$3,495.00
Cheerleading	\$9,914.00	\$7,495.00
Totals	\$491,835.00	\$339,891.00

League Services to Member Schools

The Rhode Island Interscholastic League is a service organization providing its member schools with publications, training opportunities, recognition programs, tournaments, rules interpretation meetings, and other services that assist in the administration of interscholastic sports.

Communications

The League publishes or posts on its website and in its monthly bulletin.

Athletic Rules and Regulations, includes the bylaws and regulations for the RIIL.

Tournament Programs provide tournament fans with information about the teams participating in each League-sponsored tournament/meet.

Web Site www.riil.org keeps member schools and fans up to date on League activities, rules and events.

RIIL Foundation

The RIIL Foundation was created to serve the interests of student-athletes by awarding grants in the areas of character education, sportsmanship and leadership.

Recognition

The League sponsors the **RIIL Hall of Fame** for the most distinguished individuals involved in high school athletics.

Tournaments

The League supervises and administers state tournaments in 28 athletic events for its member schools.

Assists the media outlets statewide in their coverage of high school sports.

Provides accident insurance for every student, coach, and official that participates in a league-sponsored activity.

Student Leadership Conferences

The League sponsors numerous opportunities for student-athletes to take part in an assortment of leadership and sportsmanship activities.

Student Athlete Wellness Program

The Performance Edge: Wellness for Winners is a program designed to provide our student-athletes and coaches with a comprehensive wellness program that will support our high schools by embracing the health and wellness of all participants.

Rhode Island Interscholastic League

Online @ www.riil.org

RHODE ISLAND INTERSCHOLASTIC LEAGUE

GIRLS PARTICIPATION CHART

SPORT	2004/2005		2005/2006		2006/2007	
	TEAMS	PARTICIPANTS	TEAMS	PARTICIPANTS	TEAMS	PARTICIPANTS
CROSS CTRY	41	616	41	647	42	693
FIELD HOCKEY	21	605	21	605	22	695
GOLF	1	49	1	50	1	61
ICE HOCKEY	8	167	8	168	16	212
SWIM	35	561	35	552	33	596
TENNIS	43	874	43	900	43	890
BASKETBALL	48	1170	48	1107	49	1135
GYMNASTICS	23	159	23	168	16	186
WRESTLING	0	15	0	13	0	15
VOLLEYBALL	41	897	41	923	41	994
OUTDR TRACK	40	1407	39	1475	39	1609
FAST PITCH	39	936	40	991	47	1174
SOCCER	45	1417	46	1415	46	1413
INDR TRACK	33	1134	35	1167	36	1188
BASEBALL	0	0	0	0	none	
LACROSSE	15	453	15	504	20	631
Total	441	10621	444	10837	451	11492



RHODE ISLAND INTERSCHOLASTIC LEAGUE

BOYS PARTICIPATION CHART

SPORT	2004/2005		2005/2006		2006/2007	
	TEAMS	PARTICIPANTS	TEAMS	PARTICIPANTS	TEAMS	PARTICIPANTS
BASEBALL	46	1612	48	1601	48	1721
BASKETBALL	48	1505	47	1430	47	1483
CROSS CNTRY	42	856	42	901	42	855
FOOTBALL	41	2813	41	2986	42	3017
GOLF	40	480	40	475	40	489
ICE HOCKEY	36	854	35	845	36	881
LACROSSE	14	499	14	496	20	724
SOCCER	44	1567	44	1493	44	1586
SWIM	36	267	24	278	27	323
TENNIS	39	752	40	725	40	764
INDR TRACK	33	1193	34	1241	39	1358
OUTDR TRACK	36	1476	39	1547	39	1693
WRESTLING	36	952	34	963	35	955
VOLLEYBALL	24	522	25	537	25	553
TOTAL BOYS	515	15350	497	15518	521	16412
TOTAL B & G	956	25971	941	26355	972	27,904



NATIONAL AFFILIATION

The Rhode Island Interscholastic League is a member of the National Federation of State High School Associations, which consists of the state high school associations of all 50 states and the District of Columbia. Guam, the Philippines, Puerto Rico, the Virgin Islands, and all provinces of Canada are affiliate members.

The objectives of the National Federation of State High School Associations are to:

- Serve, protect, and enhance the interstate activity interests of the high schools belonging to the state associations;
- Assist in those activities of the state associations which can best be operated on a nationwide scale;
- Sponsor meetings, publications, and activities which will permit each state association to profit by the experience of all other member associations;
- Coordinate the work so duplication will be minimized;
- Formulate, copyright, and publish rules of play or event conduct pertaining to interscholastic activities;
- Preserve interscholastic athletic records, and the tradition and heritage of interscholastic sports;
- Provide programs, services, material and assistance to state associations, high schools and individual professionals involved in the conduct and administration of interscholastic activities;
- Study in general all phases of interscholastic activities and serve as a national resource for information pertaining thereto;
- Identify needs and problems related to interscholastic activities and, where practice, provide solutions thereto; and,
- Promote the educational values of interscholastic activities to the nation's public.

Rhode Island Interscholastic League

Bldg. #6 R. I. College Campus · 600 Mt. Pleasant Avenue · Providence, RI 02908-1991

Tel: (401) 272-9844 · Fax: (401) 272-9838