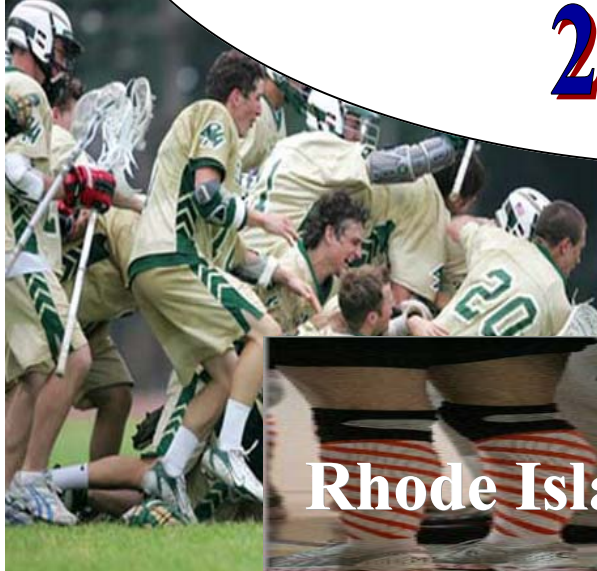




R I I I L
ANNUAL REPORT
2006-2007



Rhode Island Interscholastic League

Mission Statement

The mission of the RI Interscholastic league is to provide its member schools governance, leadership and support for interscholastic athletics which gives student-athletes opportunities to compete in an environment that stresses education, sportsmanship, integrity and safety.

Core Values

We believe:

- Athletics is an integral part of education in our schools.
- Interscholastic athletics is a privilege that enhances the education of students.
- Leadership, responsibility, sportsmanship and scholarship are essential parts of athletics.
- Athletics is an enjoyable experience which fosters valuable life lessons.
- All member schools have the opportunity to be represented and are accountable to the standards of the RIIL.
- Fostering a professional relationship among its colleagues is a responsibility of the RIIL.

Vision Statement

The RIIL is an organization with high standards for its member schools, student athletes, and constituencies. Through professional collegiality the league advocates and promotes the value of interscholastic athletics. The league provides athletic experiences that enable student athletes to reach their highest level of academic and athletic potential and prepares them to become responsible citizens.

History

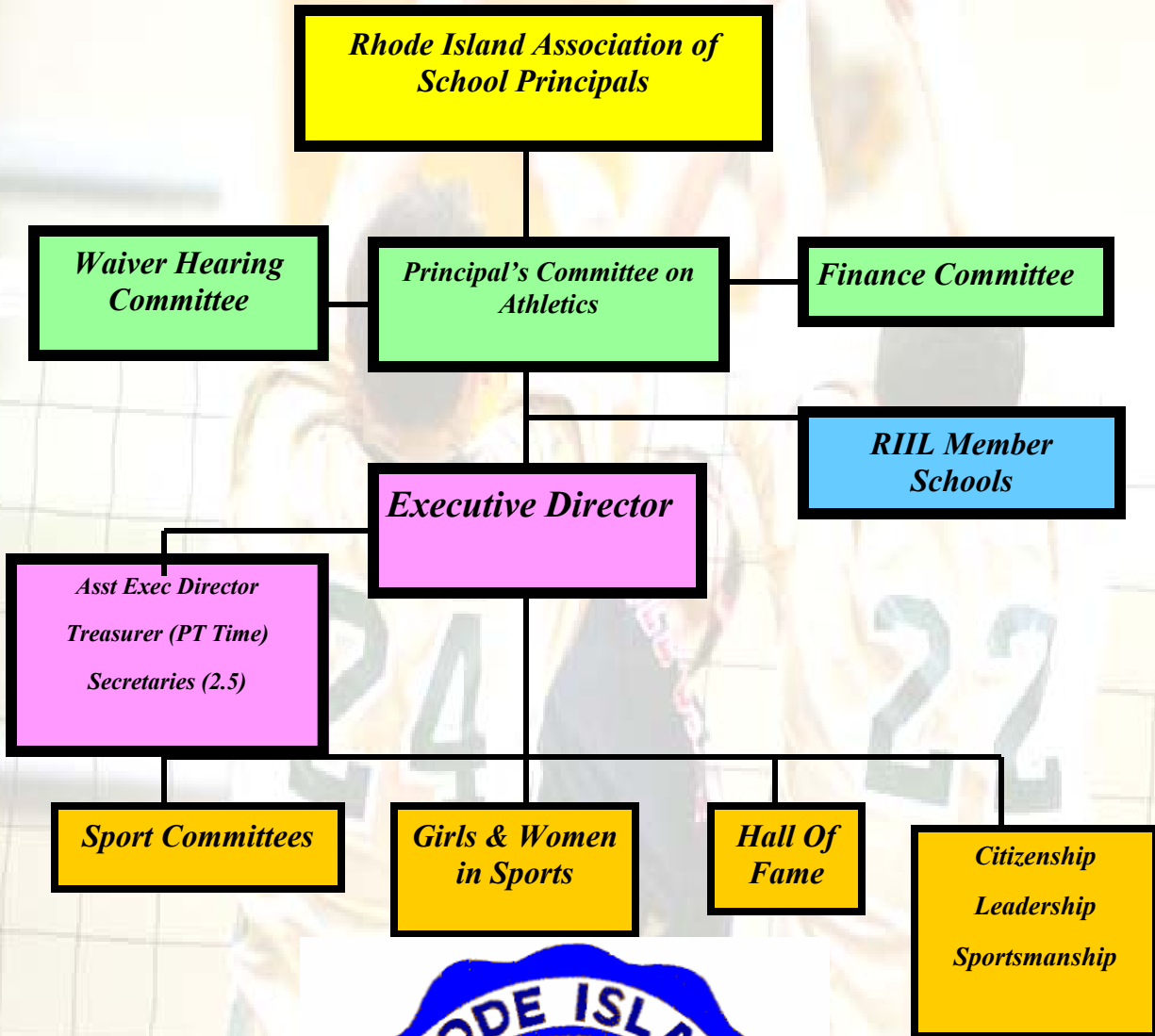
The Rhode Island Interscholastic League was established in 1932. It is a voluntary, private, incorporated, non-profit organization of principals who pledge their high schools and participants to follow the Rules and Regulations of the league.

There are fifty-four (54) public, private, and parochial high schools that make up the membership. These schools sponsor athletic activities in twenty-eight (28) sports. Over twenty thousand (20,000) young men and women compete annually in thousands of competitions.

The purpose of the Rhode Island Interscholastic League is to supervise and administer the athletic programs, contests, schedules and matters related to participating schools in the State of Rhode Island.



Rhode Island Interscholastic League Organization Chart

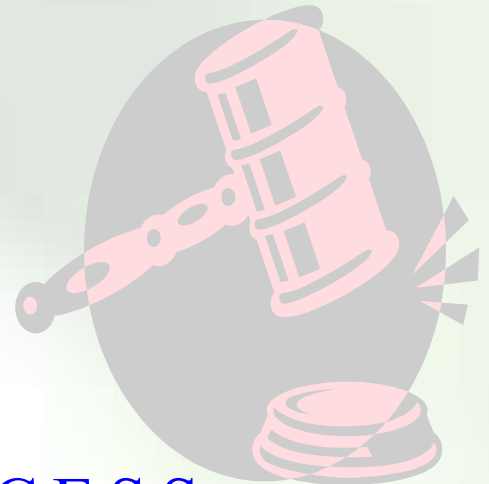




John Gray
Chairperson



Donald Kavanagh
Assistant Chairperson



GOVERNING PROCESS OF THE RIIL

The legislative body of the League is the *Principals' Committee on Athletics*, which consists of principals/assistant principals of the fifty-four (54) member high schools. The Committee meets on a monthly basis. All meetings are open to the public and anyone who wishes may attend.

Standing Committees are appointed by the Chairperson of the Principals' Committee on Athletics with the approval of the Principals' Committee on Athletics. Standing Committees are established for each sport. Others are established to address issues of general concern to the RIIL membership and to plan programs/activities for the members.

Membership on standing committees is open to superintendents, school administrators, athletic directors, coaches, game officials and physicians. Recommendations are made by these committees to help the Principals' Committee on Athletics set rules and regulations and to provide programs for its schools

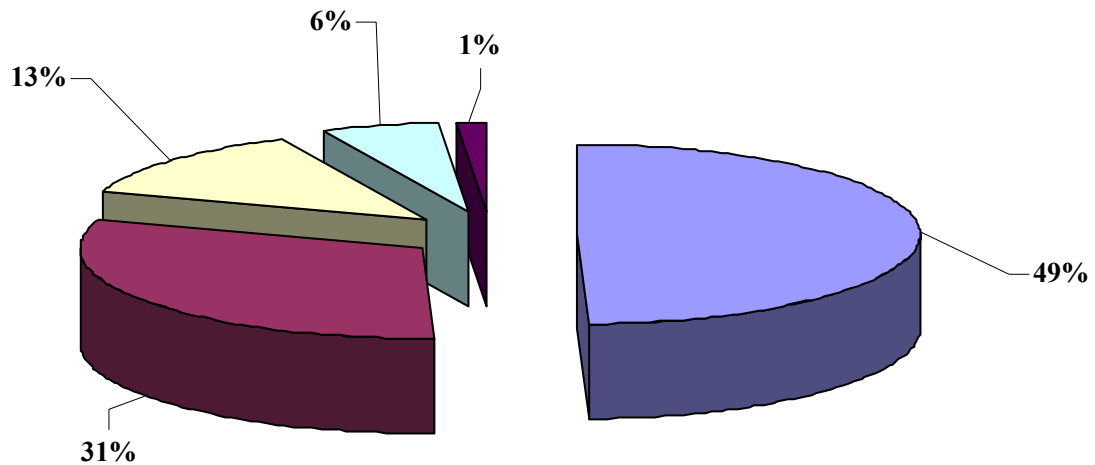
League Finances

Revenues generated from tournament ticket sales, corporate sponsors, and dues and fees make up the majority of the Leagues operating budget, which is approved annually by the Principal's Committee on Athletics. The League does not receive any state appropriations.

In addition, the League pays for:

- Liability and accident insurance for League sponsored tournaments
- Medals and Plaques for students participating in League Tournaments
- Programs for students, and coaches

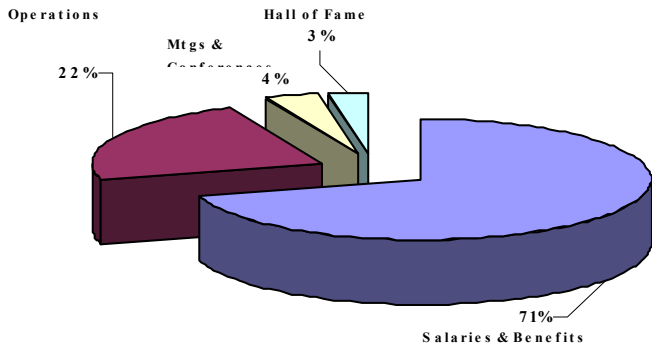
RIIL Revenue 2006-2007



2006-2007 Revenue

31%	Dues & Fees	\$279,605.00
49%	Tournaments	\$444,147.00
13%	Sponsors	\$113,731.00
6%	Investments	\$50,418.00
1%	Hall of Fame	\$12,690.00
	Total	\$903,020.00

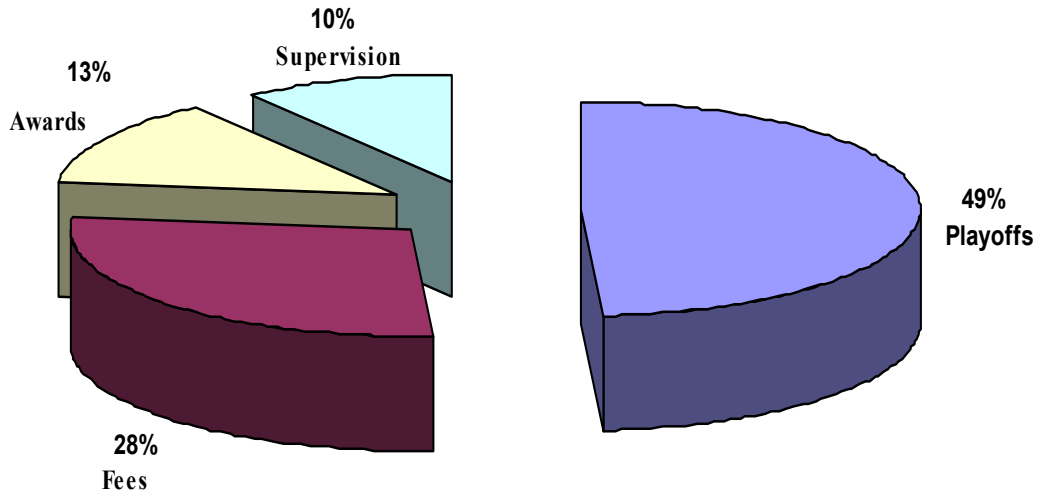
RIL Administrative Expenses 2006-2007



2006-2007 Program Expenses

28%	Fees	\$87,599.00
10%	Supervision	\$31,374.00
13%	Awards	\$40,442.00
49%	Playoffs	\$153,213.00
	Total	\$313,449.00

RIL Program Expenses 2006-2007



2006-2007 Admin Expenses

71%	Salaries & Benefits	\$309,571.00
22%	Operations	\$97,594.00
4%	Mtgs & Conferences	\$16,680.00
3%	Hall of Fame	\$12,442.00
	Total	\$380,845.00

League Services to Member Schools

The Rhode Island Interscholastic League is a service organization providing its member schools with publications, training opportunities, recognition programs, tournaments, rules interpretation meetings, and other services that assist in the administration of interscholastic sports.

Communications

The League publishes or posts on its website and in its monthly bulletin.

Athletic Rules and Regulations, includes the bylaws and regulations for the RIIL.

Tournament Programs provide tournament fans with information about the teams participating in each League-sponsored tournament/meet.

Web Site www.riil.org keeps member schools and fans up to date on League activities, rules and events.

Recognition

The League sponsors the **RIIL Hall of Fame** for the most distinguished individuals involved in high school athletics.

Tournaments

The League supervises and administers state tournaments in 28 athletic events for its member schools.

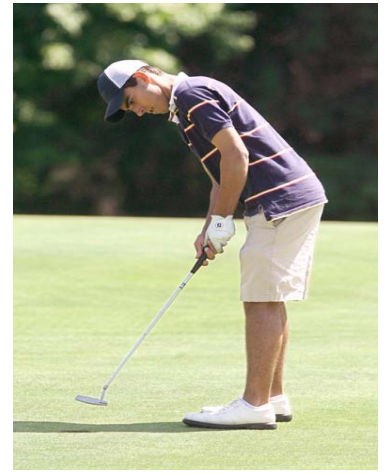
Assists the media outlets statewide in their coverage of high school sports.

Provides accident insurance for every student, coach, and official that participates in a league-sponsored activity.



Rhode Island Interscholastic League

Online @ www.riil.org



RHODE ISLAND INTERSCHOLASTIC LEAGUE

GIRLS PARTICIPATION CHART

SPORT	2004/2005		2005/2006		2006/2007	
	TEAMS	PARTICIPANTS	TEAMS	PARTICIPANTS	TEAMS	PARTICIPANTS
CROSS CTRY	41	616	41	647	42	693
FIELD HOCKEY	21	605	21	605	22	695
GOLF	1	49	1	50	1	61
ICE HOCKEY	8	167	8	168	16	212
SWIM	35	561	35	552	33	596
TENNIS	43	874	43	900	43	890
BASKETBALL	48	1170	48	1107	49	1135
GYMNASTICS	23	159	23	168	16	186
WRESTLING	0	15	0	13	0	15
VOLLEYBALL	41	897	41	923	41	994
OUTDR TRACK	40	1407	39	1475	39	1609
FAST PITCH	39	936	40	991	47	1174
SOCCER	45	1417	46	1415	46	1413
INDR TRACK	33	1134	35	1167	36	1188
BASEBALL	0	0	0	0	none	
LACROSSE	15	453	15	504	20	631
Total	441	10621	444	10837	451	11492



RHODE ISLAND INTERSCHOLASTIC LEAGUE

BOYS PARTICIPATION CHART

SPORT	2004/2005		2005/2006		2006/2007	
	TEAMS	PARTICIPANTS	TEAMS	PARTICIPANTS	TEAMS	PARTICIPANTS
BASEBALL	46	1612	48	1601	48	1721
BASKETBALL	48	1505	47	1430	47	1483
CROSS CNTRY	42	856	42	901	42	855
FOOTBALL	41	2813	41	2986	42	3017
GOLF	40	480	40	475	40	489
ICE HOCKEY	36	854	35	845	36	881
LACROSSE	14	499	14	496	20	724
SOCCER	44	1567	44	1493	44	1586
SWIM	36	267	24	278	27	323
TENNIS	39	752	40	725	40	764
INDR TRACK	33	1193	34	1241	39	1358
OUTDR TRACK	36	1476	39	1547	39	1693
WRESTLING	36	952	34	963	35	955
VOLLEYBALL	24	522	25	537	25	553
TOTAL BOYS	515	15350	497	15518	521	16412
TOTAL B & G	956	25971	941	26355	972	27,904



Rhode Island Interscholastic League Principals' Committee on Athletics 2006-2007 Annual Report

It is indeed a pleasure for me to submit the Rhode Island Interscholastic League Principals' Committee on Athletics 2006-2007 Annual Report to the Rhode Island Principal's Association.

I am excited and look forward to the challenges of 2007-2008. However, I recognize that people can not be successful and attain their goals unless they have the cooperation and assistance from others. With the help of the Rhode Island Interscholastic League staff, the Principals' Committee on Athletics, School Principals, Athletic Directors, Coaches, Officials and Volunteers we hope to maintain the mission and high standards that the RIIL has embodied for many years. Their hard work and service in advocating and supporting what is best for the student-athletes we serve and their role in the success of the League is acknowledged and appreciated.

The Principals' Committee on Athletics, operating under its corporate title of the Rhode Island Interscholastic League, provides its member principals and their schools an opportunity to compete on a statewide basis in a sports program administered by principals. The League sports include Baseball, Basketball, Cross Country, Field Hockey, Football, Golf, Gymnastics, Ice Hockey, Lacrosse, Indoor and Outdoor Track, Soccer, Fast and Slow Pitch Softball, Swimming, Tennis, Volleyball, and Wrestling. In excess of twenty-seven thousand (27,000) girls and boys on nine hundred fifty-three (953) individual school teams participated in the aforementioned sports offered by the League representing fifty-six (56) public, private, and parochial member schools.

The 2006-2007 school year has been a very busy one for the League staff and the Principals' Committee on Athletics. In addition to the monthly meeting(s) of the Committee, many standing committees and ad hoc committees have met throughout the year to deal with issues being addressed by the League. In short 2006-2007 has been one of the busiest and most productive years in recent history.

The Waiver Request Hearing Committee heard a total of twenty-four (29) waiver requests for eligibility issues such as transfer, eight-semester, age, academic eligibility, and foreign exchange. In addition, the Principals' Committee heard seven (10) appeals of decisions rendered by the Waiver Request Hearing Committee. This has proved to be a very successful process for two reasons. It added another level for hearings, which allowed the unsuccessful applicant(s) to appeal to the Principals' Committee on Athletics. Secondly, it reduced the number of hearings conducted by the Principals' Committee on Athletics.

In September 2006, the Rhode Island Interscholastic League conducted its Annual Conference for Principals/Assistant Principals and Athletic Administrators. The workshop was held at Johnson and Wales University, Harborside Campus in Providence. The purpose of the program was to prepare for the upcoming school year. Many issues pertinent to supervising and administering high school athletic programs for the League's fifty-six (56) member schools were addressed. Mr. Tim Flannery, Assistant Director of the National Association of State High School Associations was the principal speaker, and introduced the newly adopted NFHS Principles of Coaching Course. The message he delivered was critical to the proposed Coaches Education Program for all RI coaches.

The Rhode Island Interscholastic League inducted eleven (11) outstanding individuals into the Rhode Island Interscholastic League High School Athletic Hall of Fame – Class of 2007. The Hall of Fame is dedicated to preserving the colorful tradition of high school athletics in Rhode Island and seeks to highlight the past in order to insure a promising future for Rhode Island high school athletics. The eleven (11) inductees were chosen after a two-level selection process involving the Hall of Fame Selection Committee and the Principals' Committee on Athletics. The inductees were: Luis Carvalho, Amelio DiNitto, Thomas Eccleston Jr. (posthumously), John William Henry (posthumously), Cynthia Tallmadge Jacobson, Richard Lee, Don Mezzanotte, Theresa Moore, Gloria Patterson, Irving Scott, and Victoria Tefft. They were inducted on Wednesday, May 2, 2007 at the Quiddnessett Country Club.

The following list represents the many accomplishments of the RI Interscholastic League during the 2006-2007 year:

- Student Leadership Conferences (September & May)
- Completed our First RIIL Audit
- Instituted and rolled out the RIIL Coaches Education Program
 - Included the NFHS Fundamentals of Coaching Course and the RIIL Rules Component
- Continued the implementation of the RIIL Strategic Plan
- Worked closely with the Finance Committee to:
 - Review and improve financial policies and procedures
 - Review present and proposed investment procedures and strategies
 - Revise and improve the ticket collection procedure at all tournament contest.
- Created the RIIL Foundation
 - Allocated funds from the RIIL to provide grants to schools to support leadership, and sportsmanship initiatives.
- Established the Sportsmanship Task Force
- Completed a separate Article with RIIL rulebook outlining sportsmanship policies and security guidelines for all high school and tournament contests.
- Established a Student Advisory Committee
- Worked with the Ad Hoc Committee on the limitation of sport season.
 - Established guidelines for practice and the maximum number of games for each sport
- Updated and distributed the RIIL Annual Report to all schools
- Revised the RIIL Rulebook which will be distributed (hard copy) to all schools
- Worked with the Cheerleading Committee to redefine the guidelines to make this a winter sport
 - Sport was approved
- Worked with the Institute for International Sport encourage schools to take part in National Sportsmanship Day.
- Worked with Cox Sports to expand coverage of all sports throughout the year.
 - Worked with Cox Sports to help establish the Cox Sport Award Program which will celebrate the accomplishments of our student-athletes.
- Added the US Air Force as a sponsor of our High School Basketball.
- Worked with North Kingstown High School TV studio and students from several high schools to create a DVD entitled – *“The Benefits of Participating in High School Athletics”*. This will be distributed to all schools.

- Expanded the hours at the RIIL Office. The office will now be open two weeks in July.
- Updated and created new RIIL publications.
- Adopted NFHS rules in ice hockey and baseball
- Worked with Nike who provided numerous free athletic shoes that were distributed to inner city students.
- Provided on-line schedules to schools in a timely manner.
- Instituted numerous RIIL rule changes.
- Established and fostered a relationship with the RI Association of Intercollegiate Athletics for Women to develop a brochure and opportunities for recruiting college women into coaching and officiating positions within the RIIL
- Working with the RI State Police, RI Department of Transportation, AAA of Southern New England, and WBRU Radio Station, the Rhode Island Interscholastic League organized and implemented a “Buckle Up Teens! Seatbelt safety TV/Radio Commercial Challenge.” Over 23 schools participated and winners of the contest were presented cash prizes. The winners will have their TV and radio commercials aired as part of a campaign aimed at raising seatbelt use among teenagers.

I want to express my sincere thanks to the Principals’ Committee on Athletics, the Strategic Planning Committee, the League staff, the sport directors, and all the people who volunteer their services for their dedication, cooperation, and hard work. The success of the Rhode Island Interscholastic League is due to the efforts of these outstanding people.

The following administrators served on the Principals’ Committee on Athletics during the 2006-2007 school year or a part of it:

- | | |
|--|--------------------|
| John Gray, Chairperson | |
| Elizabeth Marquis, Assistant Chairperson (Retired) | |
| Donald Kavanagh, Assistant Chairperson | |
| Denise Boulé | Robert Littlefield |
| Caroline Caswell | Kevin McNamara |
| Robert Cooney | Wayne Montague |
| John Craig | George Nasuti |
| Gerald Foley | Frederick Silva |
| Colleen Gribbin | Dan Warner |
| Marie Johnson | |

Listed below is a list of issues/topics that were addressed by the Principals’ Committee on Athletics, including, but not limited to:

1. Approved a change in the following RIIL Rules:
 - Article 9, Section 1. D Criminal Background Check for all sport officials.
 - Article 1, Section 20 – Conflict of Interest policy
 - Article 6, Section 6.H.1 – Athlete Ejection from a game
 - Article 11, Section 5 – Media Credential Policy.
 - Article 23, Section 1.B– Soccer Rules.

- Article 2, Section 3.C.1- Supervision at Games.
 - Article 12- Baseball : 10 Run Rule
 - Article 28 & 29 Section 8 B, 6 F- Outdoor Track
 - Article 13 Section 1: Coaches Eligibility
 - Article 3 Section 1.A-Eligibility Lists
 - Article 2 Section 2.C-Restitution Rule
 - Article 7 Section 3-Limitation of Seasons
 - Article 1 Section 12-Annual Audit
 - Article 19 section 1-Football Practice Rule
2. Approved the establishment of a Cooperative Team in Boys' Football between Providence Country Day & The Wheeler School; Girls' Hockey between Toll Gate, Pilgrim & Warwick Vets, and between Cranston East & West for the 2007-2008 season.
 3. Approved the Budget for 2006-07 year.
 4. Placed the following schools on probation: South Kingstown High School Boys' Volleyball Team and St Raphael Academy.
 5. Removed both Bishop Hendricken High School and Hope High School from probation.
 6. Approved a new Baseball Playoff Format.
 7. Girls and Women in Sports Committee presented awards at the Girls' Basketball Finals.
 8. Approved Competitive Cheer as a sport for 2007-2008.
 9. Created new Articles: Coaches Eligibility, Sportsmanship and Cheerleading in the RIIL Rules and Regulations Manual
 10. Revised the current Playoff meeting format
 11. Eliminated indoor field hockey and soccer as separate sports.

The Rhode Island Interscholastic League would like to recognize and thank the following corporate sponsors for their generous support of the League and the student-athletes it serves: AAA of Southern New England, Amica Insurance, Baden Athletic Balls, Citizens Bank, Cox Communications, CVS, Dunkin Donuts, Members United Corporate Federal Credit Union, Martin Screen Prints, MetLife Auto & Home, MF Athletics, Nike, Pawtucket Red Sox, Penn Monto, Pepsi, Shamrock Lacrosse, Sovereign Bank, Spalding, U.S. Air Force, U.S. Marines, and Wright's Farm.

The Principals Committee on Athletics is deeply grateful to the Rhode Island Association of School Principals for their continued support of its membership. Without the strong support of the principals of our member schools, the Rhode Island Interscholastic League would not enjoy the level of success that presently exists. The Committee would like to thank John Gray and Betty Marquis, Chairperson and Assistant Chairperson respectively, of the Principals' Committee on Athletics, for their leadership, expertise, and support. A thank you also to the Principals' Committee on Athletics, Sport Directors, and Standing Committee members for their dedication and hard work.

As Executive Director, I would like to acknowledge and express my appreciation to Richard Magarian, Assistant Executive Director, for his cooperation, support and efforts on behalf of the League and its student-athletes. I would also like to thank Jane Hale, RIIL Treasurer; Susana Borges, Secretary; Gail Lepore, Secretary and Julie Mancini, Secretary for the important role they play in the success of the League.

Respectfully Submitted,

Rhode Island Interscholastic League

Thomas A. Mezzanotte
Executive Director

John Gray
Chairperson, Principals' Committee on Athletics

NATIONAL AFFILIATION

The Rhode Island Interscholastic League is a member of the National Federation of State High School Associations, which consists of the state high school associations of all 50 states and the District of Columbia. Guam, the Philippines, Puerto Rico, the Virgin Islands, and all provinces of Canada are affiliate members.

The objectives of the National Federation of State High School Associations are to:

- Serve, protect, and enhance the interstate activity interests of the high schools belonging to the state associations;
- Assist in those activities of the state associations which can best be operated on a nationwide scale;
- Sponsor meetings, publications, and activities which will permit each state association to profit by the experience of all other member associations;
- Coordinate the work so duplication will be minimized;
- Formulate, copyright, and publish rules of play or event conduct pertaining to interscholastic activities;
- Preserve interscholastic athletic records, and the tradition and heritage of interscholastic sports;
- Provide programs, services, material and assistance to state associations, high schools and individual professionals involved in the conduct and administration of interscholastic activities;
- Study in general all phases of interscholastic activities and serve as a national resource for information pertaining thereto;
- Identify needs and problems related to interscholastic activities and, where practice, provide solutions thereto; and,
- Promote the educational values of interscholastic activities to the nation's public.



Rhode Island Interscholastic League

Bldg. #6 R. I. College Campus • 600 Mt. Pleasant Avenue • Providence, RI 02908-1991

Tel: (401) 272-9844 • Fax: (401) 272-9838