

R I I I L

ANNUAL REPORT

2005-2006



Rhode Island Interscholastic League

Mission Statement

The mission of the RI Interscholastic league is to provide its member schools governance, leadership, and support for interscholastic athletics which gives student athletes opportunities to compete in an environment that stresses education, sportsmanship, integrity, and safety.

Core Values

We believe:

- Athletics is an integral part of education in our schools
- Interscholastic athletics is a privilege that enhances the education of students
- Leadership, responsibility, sportsmanship, and scholarship are essential parts of athletics
- Athletics is an enjoyable experience which fosters valuable life lessons.
- All member schools have the opportunity to be represented and are accountable to the standards of the RIIL.
- Fostering a professional relationship among its colleagues is a responsibility of the RIIL.

Vision Statement

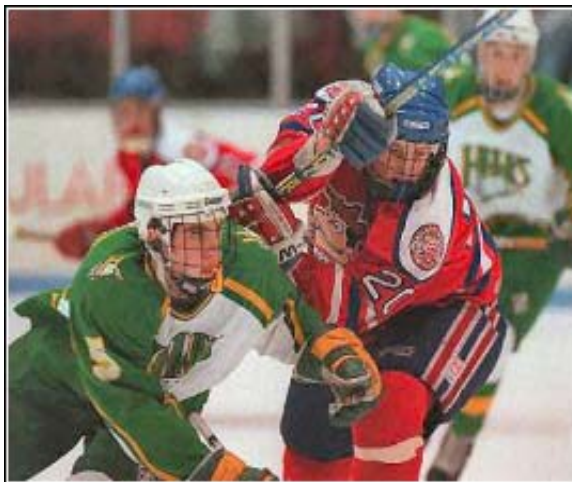
The RIIL is an organization with high standards for its member schools, student athletes, and constituencies. Through professional collegiality the league advocates and promotes the value of interscholastic athletics. The league provides athletic experiences that enable student athletes to reach their highest level of academic and athletic potential and prepares them to become responsible citizens.

History

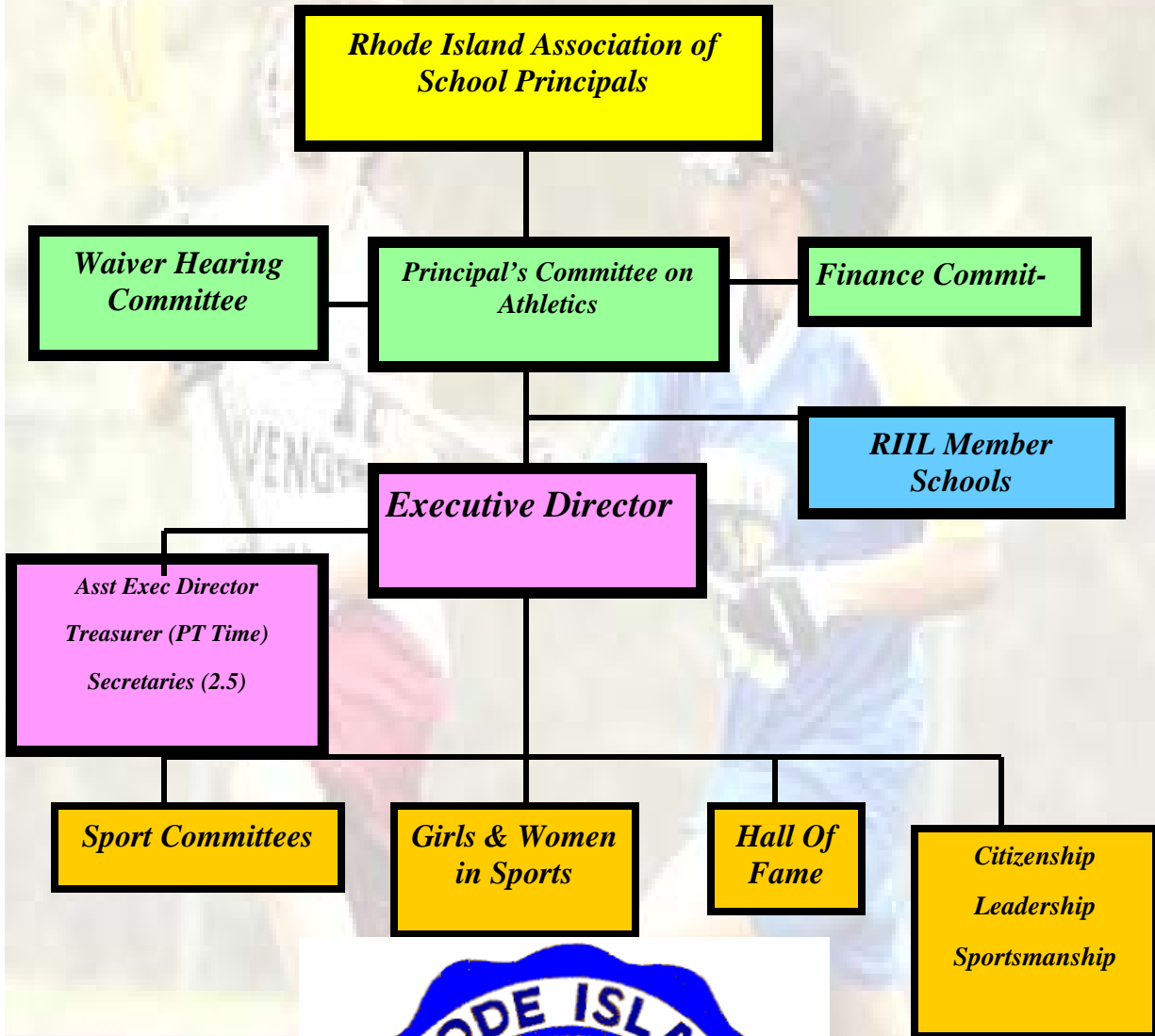
The Rhode Island Interscholastic League was established in 1932. It is a voluntary, private, incorporated, non-profit organization of principals who pledge their high schools and participants to follow the Rules and Regulations of the league.

There are fifty-five (55) public, private, and parochial high schools that make up the membership. These schools sponsor athletic activities in twenty-eight (28) sports. Over twenty thousand (20,000) young men and women compete annually in thousands of competitions.

The purpose of the Rhode Island Interscholastic League is to supervise and administer the athletic programs, contests, schedules and matters related to participating schools in the State of Rhode Island.



Rhode Island Interscholastic League Organization Chart





Betty Marquis

Assistant Chairperson

John Gray, Chairperson

GOVERNING PROCESS OF THE RIIL

The legislative body of the League is the *Principals' Committee on Athletics*, which consists of principals/assistant principals of the fifty-five (55) member high schools. The Committee meets on a monthly basis. All meetings are open to the public and anyone who wishes may attend.

Standing Committees are appointed by the Chairperson of the Principals' Committee on Athletics with the approval of the Principals' Committee on Athletics. Standing Committees are established for each sport. Others are established to address issues of general concern to the RIIL membership and to plan programs/activities for the members.

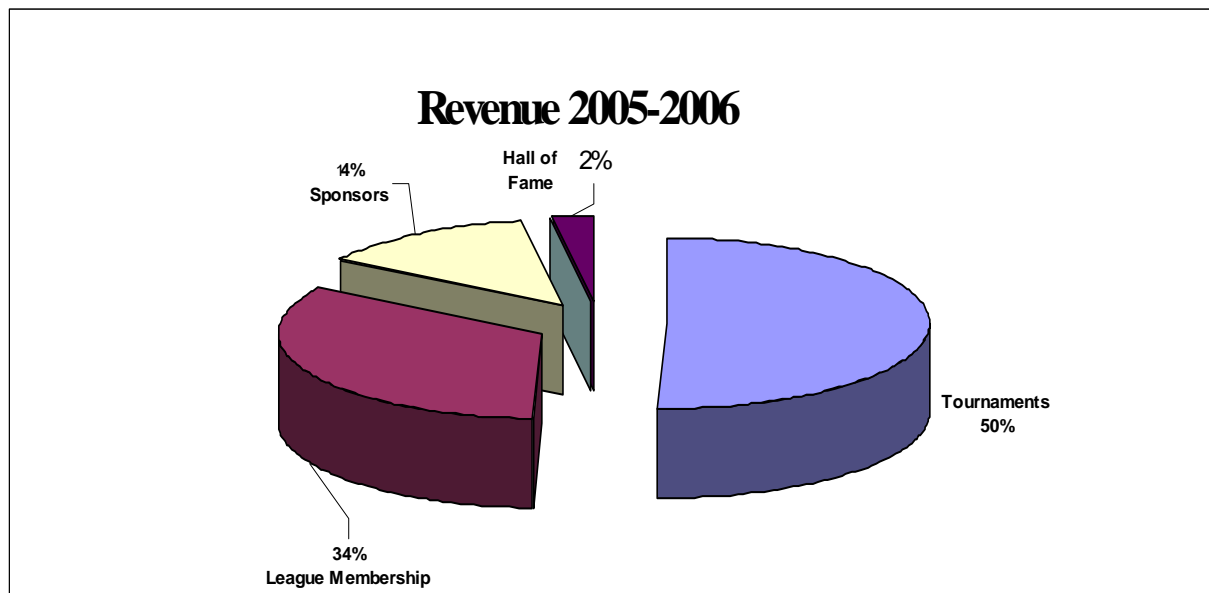
Membership on standing committees is open to superintendents, school administrators, athletic directors, coaches, game officials and physicians. Recommendations are made by these committees to help the Principals' Committee on Athletics set rules and regulations and to provide programs for its schools

League Finances

Revenues generated from tournament ticket sales, corporate sponsors, and dues and fees make up the majority of the Leagues operating budget, which is approved annually by the Principal's Committee on Athletics. The League does not receive any state appropriations.

In addition, the League pays for:

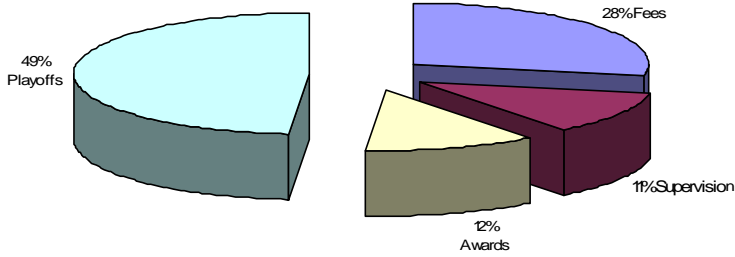
- Liability and accident insurance for League sponsored tournaments
- Medals and Plaques for students participating in League Tournaments
 - Programs for students, and coaches



2005-2006 Revenue

34%	Dues & Fees	\$263,851.00
50%	Tournaments	\$397,053.00
14%	Sponsors	\$106,950.00
2%	Hall of Fame	\$19,360.00
	Total	\$787,217.00

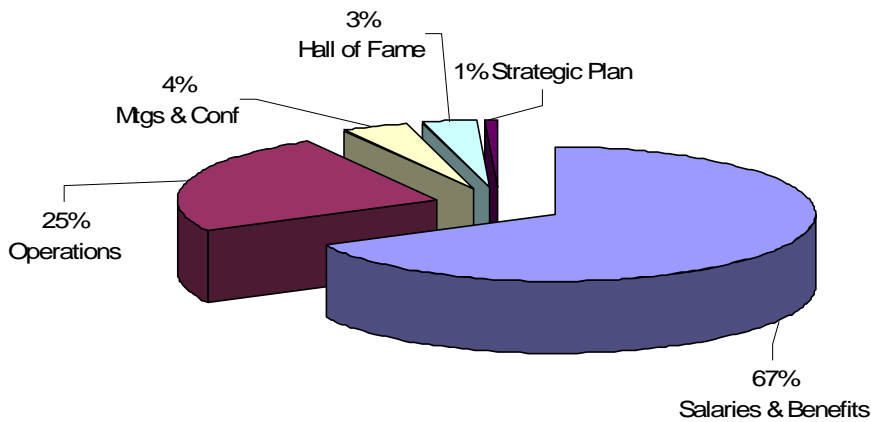
2005-2006 Program Expenses



2005-2006 Program Expenses

28%	Fees	\$80,818.00
11%	Supervision	32,282.00
12%	Awards	\$34,568.00
49%	Playoffs	\$139,188.00
	Total	\$286,856.00

2005-2006 Administrative Expenses



2005-2006 Admin Expenses

65%	Salaries & Benefits	\$274,014.00
26%	Operations	\$100,260.00
4%	Mtgs & Conferences	\$16,113.00
4%	Hall of Fame	\$13,838.00
1%	Strategic Plan	\$3,620.00
	Total	\$380,845.00

League Services to Member Schools

The Rhode Island Interscholastic League is a service organization providing its member schools with publications, training opportunities, recognition programs, tournaments, rules interpretation meetings, and other services that assist in the administration of interscholastic sports.

Communications

The League publishes or posts on its website and in its monthly bulletin.

Athletic Rules and Regulations, includes the bylaws and regulations for the RIIL.

Tournament Programs, to provide tournament fans with information about the teams participating in each League-sponsored tournament/meet.

Web Site, www.riil.org keeps member schools up to date on League activities, rules and events.

Recognition

The League sponsors the:

Hall of Fame, for the most distinguished individuals involved in high school fine arts and athletics.

Tournaments

The League:

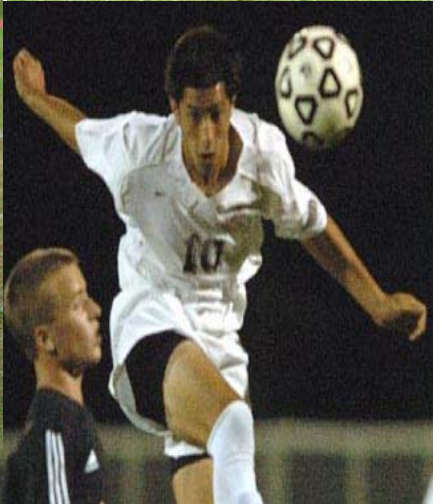
Administers state tournaments in 28 athletic events for its member schools.

Assists the media outlets statewide in their coverage of high school sports.

Provides accident insurance for every student, coach, and official that participates in a league-sponsored activity.

Rhode Island Interscholastic League

Online @ www.riil.org



RHODE ISLAND INTERSCHOLASTIC LEAGUE

GIRLS PARTICIPATION CHART

SPORT	1998		2001		2003		2005		2006	
	TEAMS/ PARTICIPANTS		TEAMS/ PARTICIPANTS		TEAMS/ PARTICIPANT		TEAMS/PARTICIPANT		TEAMS/ PARTICIPANTS	
CROSS CTRY	39	618	41	662	41	663	41	616	41	647
FIELD HOCKEY	20	651	21	634	21	631	21	605	21	605
GOLF	14	42	14	31	14	53	1	49	1	50
ICE HOCKEY	0	28	0	17	7	129	8	167	8	168
SWIM	26	361	27	529	35	530	35	561	35	552
TENNIS	43	845	44	911	44	909	43	874	43	900
BASKETBALL	44	956	46	1153	47	1123	48	1170	48	1107
GYMNASTICS	21	189	21	178	25	177	23	159	23	168
WRESTLING	--	--	--		0	15	0	15	0	13
VOLLEYBALL	40	964	41	912	41	914	41	897	41	923
OUTDR TRACK	35	1252	37	1246	41	1182	40	1407	39	1475
FAST PITCH	32	836	34	788	37	909	39	936	40	991
SLOW PITCH	16	301	16	355	11	198	8	157	8	152
SOCCER	46	1230	45	1429	45	1403	45	1417	46	1415
INDR TRACK	38	1143	37	1043	35	1509	33	1134	35	1167
BASEBALL	0	1	0	1	0	4	0	0	0	0
LACROSSE	--		6	197	9	268	15	453	15	504
Total	385	9417	439	10065	440	10121	441	10621	444	10837

RHODE ISLAND INTERSCHOLASTIC LEAGUE

BOYS PARTICIPATION CHART

SPORT	1998		2001		2003		2005		2006	
	TEAMS /PARTICIPANTS		TEAMS /PARTICIPANTS		TEAMS /PARTICIPANTS		TEAMS /PARTICIPANTS		TEAMS /PARTICIPANTS	
BASEBALL	44	1463	44	1466	44	1596	46	1612	48	1601
BASKETBALL	44	1139	45	1465	47	1569	48	1505	47	1430
CROSS CNTRY	38	679	40	760	42	788	42	856	42	901
FOOTBALL	40	1979	41	2490	41	2772	41	2813	41	2986
GOLF	41	514	40	511	42	487	40	480	40	475
ICE HOCKEY	28	627	29	717	32	768	36	854	35	845
LACROSSE	--	--	7	274	10	373	14	499	14	496
SOCCER	43	1467	43	1496	44	1450	44	1567	44	1493
SWIM	30	180	25	262	34	224	36	267	24	278
TENNIS	39	723	40	749	39	687	39	752	40	725
INDR TRACK	33	1942	34	1241	35	1201	33	1193	34	1241
OUTDR TRACK	37	1576	39	1430	38	1431	36	1476	39	1547
WRESTLING	32	949	34	968	33	834	36	952	34	963
VOLLEYBALL	24	473	25	508	24	470	24	522	25	537
TOTAL BOYS	473	12811	486	14277	505	14653	515	15350	497	15518
GIRLS	385	9417	439	10095	440	10121	441	10621	444	10837
TOTAL B & G	858	22228	925	24372	945	24774	956	25971	941	26355 **

**Total number of individual students participating— 17,006

Total number of students in multiple sports—6,993

Rhode Island Interscholastic League

Principals' Committee on Athletics

2005-2006 Annual Report

It is indeed a pleasure for me to submit the Rhode Island Interscholastic League Principals' Committee on Athletics 2005-2006 Annual Report to the Rhode Island Principal's Association.

I am excited and look forward to the challenges of 2006-2007. However, I recognize that one can not be successful and attain their goals unless they have the cooperation and assistance from others. With the help of the Rhode Island Interscholastic League staff, the Principals' Committee on Athletics, School Principals, Athletic Directors, Coaches, Officials and Volunteers we hope to maintain the mission and high standards that the RIIIL has embodied for many years. Their hard work and service in advocating and supporting what is best for the student-athletes we serve, and their role in the success of the League is acknowledged and appreciated.

The Principals' Committee on Athletics, operating under its corporate title of the Rhode Island Interscholastic League, provides its member principals and their schools an opportunity to compete on a statewide basis in a sports program administered by principals. The League sports include Baseball, Basketball, Cross Country, Field Hockey, Football, Golf, Gymnastics, Ice Hockey, Lacrosse, Indoor and Outdoor Track, Soccer, Fast and Slow Pitch Softball, Swimming, Tennis, Volleyball, and Wrestling. In excess of twenty-seven thousand (27,000) girls and boys on nine hundred fifty-three (953) individual school teams participated in the aforementioned sports offered by the League representing fifty-six (56) public, private, and parochial member schools.

The 2005-2006 school year has been a very busy one for the League staff and the Principals' Committee on Athletics. In addition to the monthly meeting(s) of the Committee, many standing committees and ad hoc committees have met throughout the year to deal with issues being addressed by the League.

The Waiver Request Hearing Committee heard a total of twenty-four (24) waiver requests for eligibility issues such as transfer, eight-semester, age, academic eligibility, and foreign exchange. In addition, the Principals' Committee heard seven (7) appeals of decisions rendered by the Waiver Request Hearing Committee. This has proved to be a very successful process for two reasons. It added another level for hearings, which allowed the unsuccessful applicant(s) to appeal to the Principals' Committee on Athletics. Secondly, it reduced the number of hearings conducted by the Principals' Committee on Athletics.

In September 2005, the Rhode Island Interscholastic League conducted its Annual Conference for Principals/Assistant Principals and Athletic Administrators. The workshop was held at Johnson and Wales University, Harborside Campus in Providence. The purpose of the program was to prepare for the upcoming school year. Many issues pertinent to supervising and administering high school athletic programs for the League's fifty-six (56) member schools were addressed. A distinguished panel representing the RIIIL Sports Medicine Advisory Committee presented information and answered questions relating to the need for Athletic Trainers at all high school sport activities. The message they delivered was critical to the medical needs of our athletes, and from all feedback had a significant impact on our school administrators.

The Rhode Island Interscholastic League inducted ten (10) outstanding individuals into the Rhode Island Interscholastic League High School Athletic Hall of Fame – Class of 2006. The Hall of Fame is dedicated to preserving the colorful tradition of high school athletics in Rhode Island and seeks to highlight the past in order to insure a promising future for Rhode Island high school athletics. The ten (10) inductees were chosen after a two-level selection process involving the Hall of Fame Selection Committee and the Principals' Committee on Athletics. The inductees were: Salvatore J. Augeri, Louis A. Cimini, Jane C. Hale, Joyce Ryan Harvey, John B. Harwood, Anne L. Hird, Richard B. Lynch, John H. Rollins, Edward C. Stebbins (posthumously), and Mark van Eeghen. They were inducted on Wednesday, May 3, 2006 at the Quiddnessett Country Club.

The 2005-2006 year marked the end of the two (2) year alignment for all Rhode Island Interscholastic League sports. Beginning in the fall of 2006 all sports will have new school alignments. This alignment will be for four (4) years (Fall 2006 – June 2010). The criteria for alignment were approved by the Principals' Committee on Athletics.

A Strategic Planning Committee was organized to develop the first RIIL Strategic Plan. After numerous meetings the Strategic Planning Committee presented the RIIL Strategic Plan to the Principals' Committee on Athletics for approval. At the June 2006 meeting, the Principals' Committee on Athletics approved the RIIL Strategic Plan. Also included and approved in this plan is a Financial Policies and Procedures Manual for the Rhode Island Interscholastic League.

The RIIL Strategic Plan established a long-range direction for the League and provides a clear focus for future planning. It also provides a framework for improving programs, management functions and the evaluation of our organization's progress.

I want to express my sincere thanks to the Principals' Committee on Athletics, the Strategic Planning Committee, the League staff, the sport directors, and all the people who volunteer their services for their dedication, cooperation, and hard work. The success of the Rhode Island Interscholastic League is due to the efforts of these outstanding people.

Working with the RI State Police, RI Department of Transportation, AAA of Southern New England, and WBRU Radio Station, the Rhode Island Interscholastic League organized and implemented a "Buckle Up Teens! Seatbelt safety TV/Radio Commercial Challenge." Over 23 schools participated and winners of the contest were presented cash prizes. The winners will have their TV and radio commercials aired as part of a campaign aimed at raising seatbelt use among teenagers.

New Corporate Sponsors for the League included: Nike, Sovereign Bank, Citizens Bank, Dunkin Donuts, Shamrock Lacrosse, and Medtronics. The Rhode Island Interscholastic League is thankful for the support and generosity of all of our sponsors. Through their efforts our student-athletes and the Rhode Island Interscholastic League can continue to offer high quality programs. MetLife, our Boys' and Girls' Soccer Sponsor, has teamed up with the Rhode Island Interscholastic League for the past 25 years! MetLife Auto and Home's support of Interscholastic League soccer remains the longest-running corporate sponsorship in Rhode Island high school sports.

During the year, agreements were reached with all sport officials' associations. As in the past, the agreement included a three percent (3%) increase per year over the next three (3) years.

A new two (2) year agreement was reached with the RI Rink Managers Association. Under this agreement, the association's game guarantee was increased. In addition, the League agreed to pay athletic trainers for all games. In return, the association agreed to continue to provide quality ice time and facilities for our teams. In January, the Cranston Memorial Ice Rink closed due to a fire. Thanks to the cooperation of all other rinks, we were able to complete our regular season schedule and playoffs.

The following administrators served on the Principals' Committee on Athletics during the 2005-2006 school year or a part of it:

John Gray, Chairperson

Elizabeth Marquis, Assistant Chairperson

Denise Boulé

Colleen Gribbin

Candace Caluori *Resigned Oct 2005*

Marie Johnson

Robert Cooney

Donald Kavanagh

John Craig

Robert Littlefield

Edward Daft

Kevin McNamara *Appointed Oct 2005*

Paula Dinoto *Appointed Oct 2005*

Frederick Silva

Gerald Foley

Dan Warner

Cheryl Gomes *Resigned Oct 2005*

Listed below is a list of issues/topics that were addressed by the Principals' Committee on Athletics, including, but not limited to:

1. Approved a change in the following RIIL Rules:
 - Article 19, Section 4.A - Medical personnel assigned to Hockey rinks.
 - Article 2, Section 3.B.1 – Playoff Finals Attendance.
 - Article 9, Section 9.H – Suspension of Activities Due to Weather.
 - Article 6, Section 6.A – Athlete Ejections.
 - Article 16, Section 4.C – Medical Personnel at Games.
 - Article 6, Section 6.B.3 – Coach Ejection.
 - Article 3, Section 4.E – Student Placements.
 - Article 1, Section 20.A – RIIL Tournament Supervisors.
2. Approved rule changes in the following sport:
 - Boys' and Girls' Ice Hockey – Article 19, Section 5 C & D – Overtime Periods.
3. Approved a change in the Hockey Alignment for the 2005-2006 season.
4. Approved the establishment of a Cooperative Team in Boys' Ice Hockey between Rogers and Tiverton high schools; Girls' Hockey between Bishop Keough/Wheeler/Saint Raphael's.
5. Approved the Budget for 2005-06 year.
6. Placed the following schools on probation: Hope High School and Cranston West High School.
7. Commended both Bishop Hendricken High School and Hope High School for their compliance with the terms of their probation.
8. Approved a new Basketball Playoff Format for the Boys' and Girls' Finals at the Ryan Center.
9. Girls and Women in Sports Committee presented awards at the Girls' Basketball Finals.
10. Approved the establishment of the Citizenship, Leadership and Sportsmanship Committee, to be chaired by Dan Warner, principal of Narragansett High School.
11. Approved a new Boys' and Girls' Hockey Playoff Format.
12. Approved a Sport Director Checklist.
13. Approved a new three (3) year T-shirt Contract with Martin Screen Print Company.

The Rhode Island Interscholastic League would like to recognize and thank the following corporate sponsors for their generous support of the League and the student-athletes it serves: AAA, Amica Insurance, Baden Athletic Balls, Citizens Bank, Cox Communications, CVS, Dunkin Donuts, Empire Corporate Federal Credit Union, Martin Screen Prints, Medtronics, MetLife Auto & Home, MF Athletics, Nike, Pawtucket Red Sox, Penn Monto, Pepsi, Shamrock Lacrosse, Sovereign Bank, Spalding, U.S. Air Force, U.S. Marines, and Wright's Farm.

The Principals Committee on Athletics is deeply grateful to the Rhode Island Association of School Principals for their continued support of its membership. Without the strong support of the principals of our member schools, the Rhode Island Interscholastic League would not enjoy the level of success that presently exists. The Committee would like to thank John Gray and Betty Marquis, Chairperson and Assistant Chairperson respectively, of the Principals' Committee on Athletics, for their leadership, expertise, and support. A thank you also to the Principals' Committee on Athletics, Sport Directors, and Standing Committee members for their dedication and hard work.

As Executive Director, I would like to acknowledge and express my appreciation to Richard Magarian, Assistant Executive Director; for his cooperation, support and efforts on behalf of the League and its student-athletes. I would also like to thank Jane Hale, RIL Treasurer; Ruth Nicastro, Secretary; Susana Borges, Secretary; and Gail Lepore, Secretary; for the important role they play in the success of the League.

Respectfully Submitted,

RHODE ISLAND INTERSCHOLASTIC LEAGUE

John Gray
Chairperson
Principals' Committee on Athletics

Thomas A. Mezzanotte
Executive Director

NATIONAL AFFILIATION

The Rhode Island Interscholastic League is a member of the National Federation of State High School Associations, which consists of the state high school associations of all 50 states and the District of Columbia. Guam, the Philippines, Puerto Rico, the Virgin Islands, and all provinces of Canada are affiliate members.

The objectives of the National Federation of State High School Associations are to:

- Serve, protect, and enhance the interstate activity interests of the high schools belonging to the state associations;
- Assist in those activities of the state associations which can best be operated on a nationwide scale;
- Sponsor meetings, publications, and activities which will permit each state association to profit by the experience of all other member associations;
- Coordinate the work so duplication will be minimized;
- Formulate, copyright, and publish rules of play or event conduct pertaining to interscholastic activities;
- Preserve interscholastic athletic records, and the tradition and heritage of interscholastic sports;
- Provide programs, services, material and assistance to state associations, high schools and individual professionals involved in the conduct and administration of interscholastic activities;
- Study in general all phases of interscholastic activities and serve as a national resource for information pertaining thereto;
- Identify needs and problems related to interscholastic activities and, where practice, provide solutions thereto; and,
- Promote the educational values of interscholastic activities to the nation's public.



Rhode Island Interscholastic League

Bldg. #6 R. I. College Campus · 600 Mt. Pleasant Avenue · Providence, RI 02908-1991

Tel: (401) 272-9844 · Fax: (401) 272-9838